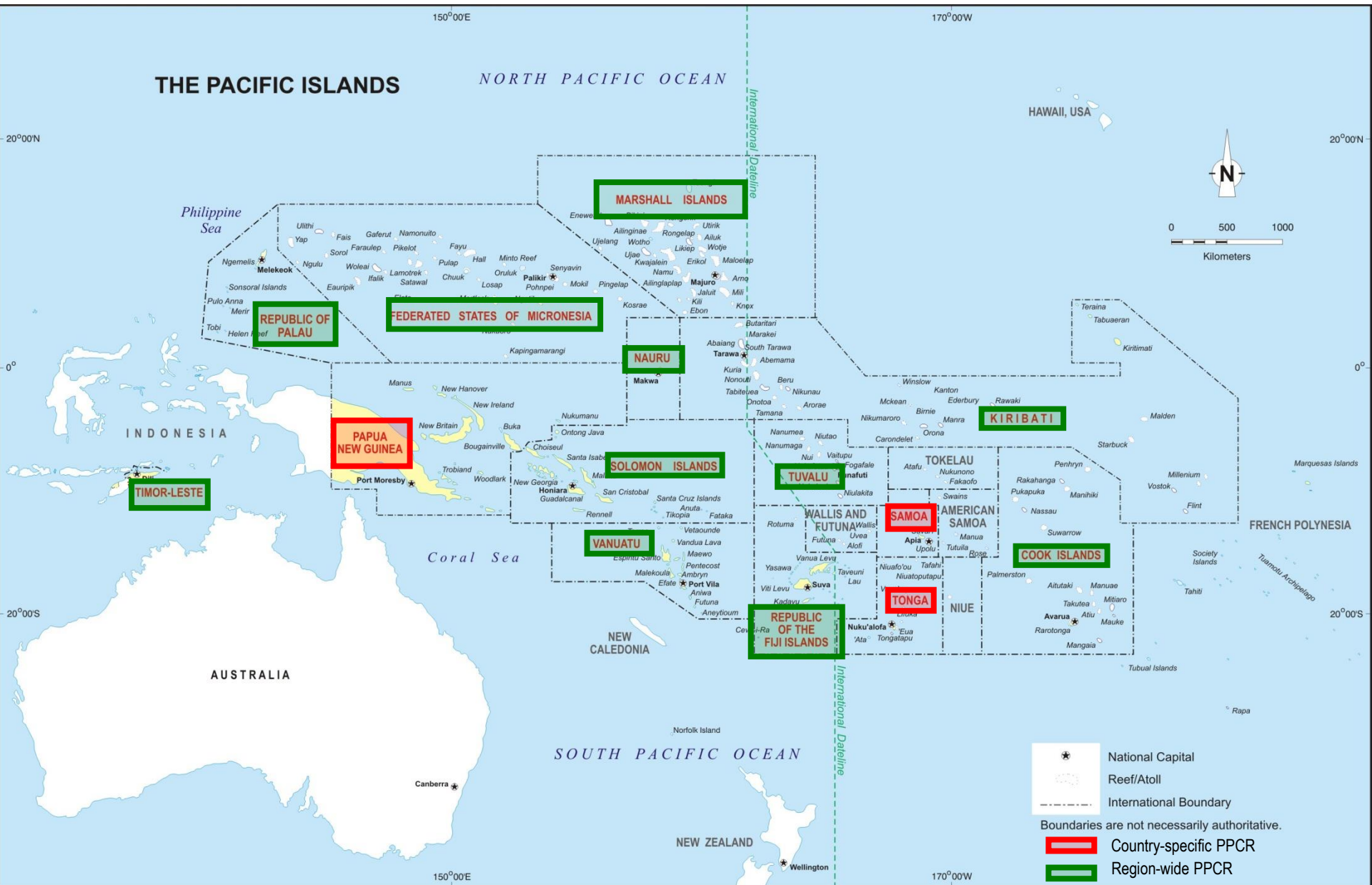




**Meeting of PPCR-SC**  
**30<sup>th</sup> April 2012, Washington, D.C., USA**  
Introduction to PPCR Pacific





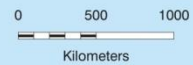
# THE PACIFIC ISLANDS

NORTH PACIFIC OCEAN

170°00'W

150°00'E

HAWAII, USA



20°00'N

20°00'N

0°

0°

20°00'S

20°00'S

Philippine Sea

INDONESIA

Coral Sea

AUSTRALIA

SOUTH PACIFIC OCEAN

NEW ZEALAND

FRENCH POLYNESIA

REPUBLIC OF PALAU

FEDERATED STATES OF MICRONESIA

MARSHALL ISLANDS

NAURU

PAPUA NEW GUINEA

SOLOMON ISLANDS

TIMOR-LESTE

VANUATU

TUVALU

KIRIBATI

SAMOA

AMERICAN SAMOA

COOK ISLANDS

TONGA

REPUBLIC OF THE FIJI ISLANDS

NIUE

- National Capital
- Reef/Atoll
- International Boundary
- Boundaries are not necessarily authoritative.
- Country-specific PPCR
- Region-wide PPCR

150°00'E

170°00'W

Canberra

Wellington



# The Pacific Plan 2005 and PIFACC 2010-2015

## Pacific Plan

- For strengthening regional cooperation and integration – a living plan
- Focuses on a number of key areas including sustainable development – highlighting **climate change**

## Pacific Islands Framework on Climate Change

- Provides overall framework for climate change engagement
- Recognises the link between Climate Change and DRR
- Underpinned by a regional architecture 60 years in the making with 10 intergovernmental agencies



# Pacific Region's Vulnerabilities to Climate Change

- **Key climate change challenges:** Sea level rise, extreme weather events, changes in precipitation, increase in ocean temperature and acidification; food and water security, critical infrastructure, health impacts
- **Social and Economic Impacts:** threats to food production, land and marine resources degradation, threats to infrastructure, decreased availability of fresh water, changing distribution of disease vectors, migration
- **Capacity Constraints:** Limited capacity and few options to plan for, or design, ways to adapt
  - **Lack of baseline data & scientific information**
  - **Institutional weaknesses** – responsibilities stretched thin, and lead for adaptation often in environment ministries with limited capacity
  - **Internal financing** - Cannot afford new technologies or expensive financing for adaptation interventions
  - **External financing** - Limited capacity to handle complex financing arrangements for global climate change funds and to coordinate multi-donor activities



# PPCR Pacific

**Overall objective:** address capacity, knowledge and resource constraints to achieve transformational climate resilience, complementing and building on ongoing support

## Support Provided at Two Levels: Country & Regional

- Country-specific interventions
  - Samoa SPCR (endorsed April 2011)
  - Tonga SPCR (PPCR SC consideration today)
  - PNG SPCR (in final stages of preparation following independent review, will be submitted for PPCR SC consideration by mail by 1 June)
- Region-wide activities covering 14 countries
  - Regional SPCR (PPCR SC consideration today)

## Partnership:

- **Country-level** – joint collaboration government and CSOs (incl private sector)
- **Regional organizations** – PIFS, SPREP, SPC, FFA important role in design
- **Development partners** - close consultation with active development partners, especially AusAID and UNDP (also EU, DFID and others)

## Allocation: \$75m

- **Samoa** (\$25m), **PNG** (\$25m), **Tonga** (\$15m), **Regional** (\$10m)

# *Strategic Program for Climate Resilience* **(SPCR) for Kingdom of Tonga**

PPCR-SC Meeting  
30<sup>th</sup> April 2012  
Washington, D.C., USA

ADB



Government of Tonga

CIF  
CLIMATE  
INVESTMENT  
FUNDS

# *Strategic Program for Climate Resilience (SPCR) for Tonga*

## **Outline**

- 1. Introduction**
- 2. Broad-based consultation process**
- 3. Priority areas for transformational change**
- 4. Proposed investments**
- 5. Expected transformational change**
- 6. Institutional arrangements for implementation**
- 7. Linkages with Regional Track**

**ADB**



Government of Tonga

**CIF** CLIMATE  
INVESTMENT  
FUNDS

# 1. Introduction to SPCR

- Facilitates *transformational change* to climate resilient development *based on Tonga's pioneering work to integrate climate change adaptation (CCA) and disaster risk management (DRM) into national planning process*.
- Focuses on *priority risks* affecting vulnerable communities, infrastructure, natural ecosystems and the economy.
- Addresses *risks from current exposure to existing climate extremes (floods, drought, heat extremes, increase in cyclone intensity) and climate variability*
- Facilitates “*capacity building*” within vulnerable communities, sectors and agencies.

ADB



Government of Tonga

CIF CLIMATE  
INVESTMENT  
FUNDS



# SPCR Builds Upon Existing National Strategies



The Kingdom of Tonga's

## *Initial National Communication*

His Majesty's Government of the Kingdom of Tonga



### **TONGA National Infrastructure Investment Plan**

October 2010



**PRIF**

Pacific Region Infrastructure Facility



THE KINGDOM OF TONGA

## **JOINT NATIONAL ACTION PLAN ON CLIMATE CHANGE ADAPTATION AND DISASTER RISK MANAGEMENT 2010-2015**



JULY 2010



In response to  
United Nations Framework Convention on Climate Change

## 2. Broad-based consultation process (September 2011, November 2011, March 2012)

- *Stocktaking*
- *Assessment of Climate Change Risks* by sector  
Thematic Working Groups
- *Adaptation Capacity Assessment* (national, sectoral, community)
- *Identification of Priority Interventions* to Address Risks during National Consultative Workshop
- *Resilience Assessment*

ADB



Government of Tonga

CIF CLIMATE  
INVESTMENT  
FUNDS

## 3. Priority areas for facilitating transformational change

Addressing national priorities based on consultations and Tonga's CCA/DRM needs:

### *Priority areas for transformational change*

- Build capacity at national, sectoral and community levels
- Provide information, tools, legislative frameworks for informed climate change and related disaster risk management
- Provide access to resources (technical, human, financial) to address CCA/DRR priorities

### **Overall Objective**

Enable implementation of Tonga's national strategy to integrate CCA and related DRM.

ADB



Government of Tonga

CIF CLIMATE  
INVESTMENT  
FUNDS

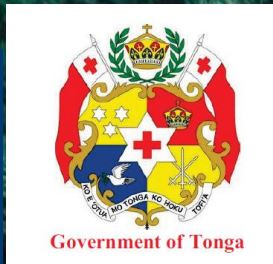
## 4. Proposed investments

Component 1 - Capacity Building to Support Transformation to a Climate Resilient Development Path

Component 2 – Sustainable Climate Change Financing

Component 3 – Building Ecosystem Resilience and Climate Proofing Critical Infrastructure (including coastal protection systems)

ADB



Government of Tonga

CIF CLIMATE  
INVESTMENT  
FUNDS

# Component 1: Capacity Building to Support Transformation to a Climate Resilient Development Path

## Objective

*Support capacity building to mainstream CCA and DRM into development planning at the national, sectoral, and community levels.*

## Outcome

Establishment in Tonga of a pool of trained and qualified specialists to support CCA and DRM mainstreaming activities at national, sectoral and community levels

Proposed allocation: **\$3.8m**

## Component 2 – Sustainable Climate Change Financing

### Objective

*Support establishment of nationally-driven, responsive, transparent, quick-dispersing climate change financing framework & small grants scheme*

### Outcome

Priority CCA/DRM projects in vulnerable communities and sectors supported & social safety net established to address impacts from climate extreme events on livelihoods and food security

Proposed allocation: **\$5.2m**

ADB



CIF CLIMATE  
INVESTMENT  
FUNDS

# Component 3 – Building Ecosystem Resilience and Climate Proofing Critical Infrastructure (including coastal protection systems)

## Objective

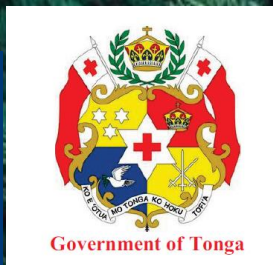
*Strengthen physical planning and development processes to **improve resilience of coastal ecosystems and climate proof existing critical infrastructure***

## Outcome

A climate-resilient national infrastructure investment plan & piloted enabling framework for climate proofing critical ports infrastructure. Coastal fisheries/agriculture/protected areas more climate resilient.

Proposed allocation: **\$6.0m**

ADB



CIF CLIMATE  
INVESTMENT  
FUNDS

# Co-financing and Parallel Financing

## Component 1

Budget Item	Grant Request (\$)	Cofinancing and Parallel Financing
Design/implement train-the-trainer program and roll-out training	1,000,000	GCCA USP (shared) EU 8,000,000 GIZ/SPC CCCPIR (shared) Euro 4,200,000
Scholarships	250,000	
Develop enabling legal framework for CCA and DRM	200,000	
Staffing/training of the JNAP/PPCR management unit + PPCR project management	1,350,000	Multiple donors supporting
Train/assist pilot vulnerable communities to undertake community-level climate change vulnerability mapping, adaptation planning, and disaster risk management	450,000	GIZ/SPC CCCPIR (shared) Euro 4,200,000
Develop/establish community-based early warning systems in pilot communities	550,000	AusAID SPSLCMP funded under A\$150,000,000 ICCAI
<b>Total</b>	<b>3,800,000</b>	



# Co-financing and Parallel Financing

## Component 2

Budget Item	Grant Request (\$)	Co financing and Parallel Financing
Legally establish and operationalize the Climate Change Trust Fund.	200,000	AusAID A\$70,000
Provide seed funding to the Climate Change Trust Fund to launch a small grants program to implement community climate change risk management measures, primarily focusing on (i) climate proofing critical infrastructure using hard and soft options (including community climate resilient infrastructure initiatives for access roads, jetties/wharves, and water supplies), and (ii) support for climate change and disaster risk microfinance and micro-insurance program - for farmers, fishers, and vulnerable communities and groups, in particular women.	5,000,000	UNDP/GEF small grants program \$70,000
Total	5,200,000	

# Co-financing and Parallel Financing

## Component 3

Budget Item	Grant Request (\$)	Cofinancing and Parallel Financing
Establish national system of real-time hydro-meteorological and coastal monitoring stations and capacity building for the Tonga Meteorological Service (TMS) and Ministry of Lands, Survey and Natural Resources (MLSNR)	1,500,000	Australian Government PICCPP (shared) budget tbc
Water resource inventory and development of an integrated coastal and water resource management plan	1,500,000	GEF/UNDP/SPREP \$700,000 Australian Government PASAP A\$1,800,000
Ecosystem-based climate resilient fisheries/agriculture/protected areas management in pilot vulnerable communities	1,000,000	MESCAL (shared) \$350,000 GIZ/SPC CCCPIR (shared) Euro 4,200,000 SCICOFISH (shared) Euro 9,000,000
Develop "climate resilient" NIIP through mentoring/training of local counterparts and establishment of "enabling framework" for climate proofing critical ports infrastructure (including climate proof relevant building codes and engineering design). Some initial implementation of physical investments should commence to inform the development of the enabling framework.	2,000,000	AusAID PCCSP (shared) A\$20,000,000 EU NDF (shared) Euro 20,000,000
Total	6,000,000	

## 5. Expected transformational change

**Overall Outcome- Tonga's resilience to climate change and related disasters enhanced through **strengthened capacity, increased knowledge/information and greater access to finance and technical support.****

- 1.Pool of CCA/DRR mainstreaming specialists
- 2.Communities trained to evaluate and manage CC risks & access technology/finance to climate-proof community infrastructure and reduce food security impacts
- 3.Tonga's Climate Change Trust Fund established and operational
- 4.CCA/DRR integrated into Tonga's physical planning processes at national, sectoral and community levels
5. Coastal fisheries more resilient & coastal infrastructure less vulnerable to climate change and related disasters

ADB



Government of Tonga

CIF CLIMATE  
INVESTMENT  
FUNDS

## 6. Institutional arrangements for implementation

- **Ministry of Environment & Climate Change (MECC) and Finance and National Planning (MoFNP)** - coordination of SPCR implementation, monitoring & oversight
- MECC reports to **Cabinet Committee on Climate Change**
- **Technical Working Group** for Climate Change - involvement of government agencies, statutory boards and CSOs (including private sector)
- **Project Management Unit (PMU)** - separate but working with JNAP Secretariat
  - Eventual merging of PMU, JNAP Secretariat and other PMUs into **umbrella PMU** for all CCA/DRR projects
- Consultation with **development partners, regional organisations and PPCR country pilots** (Samoa, Tonga, Papua New Guinea) during detailed program design & implementation

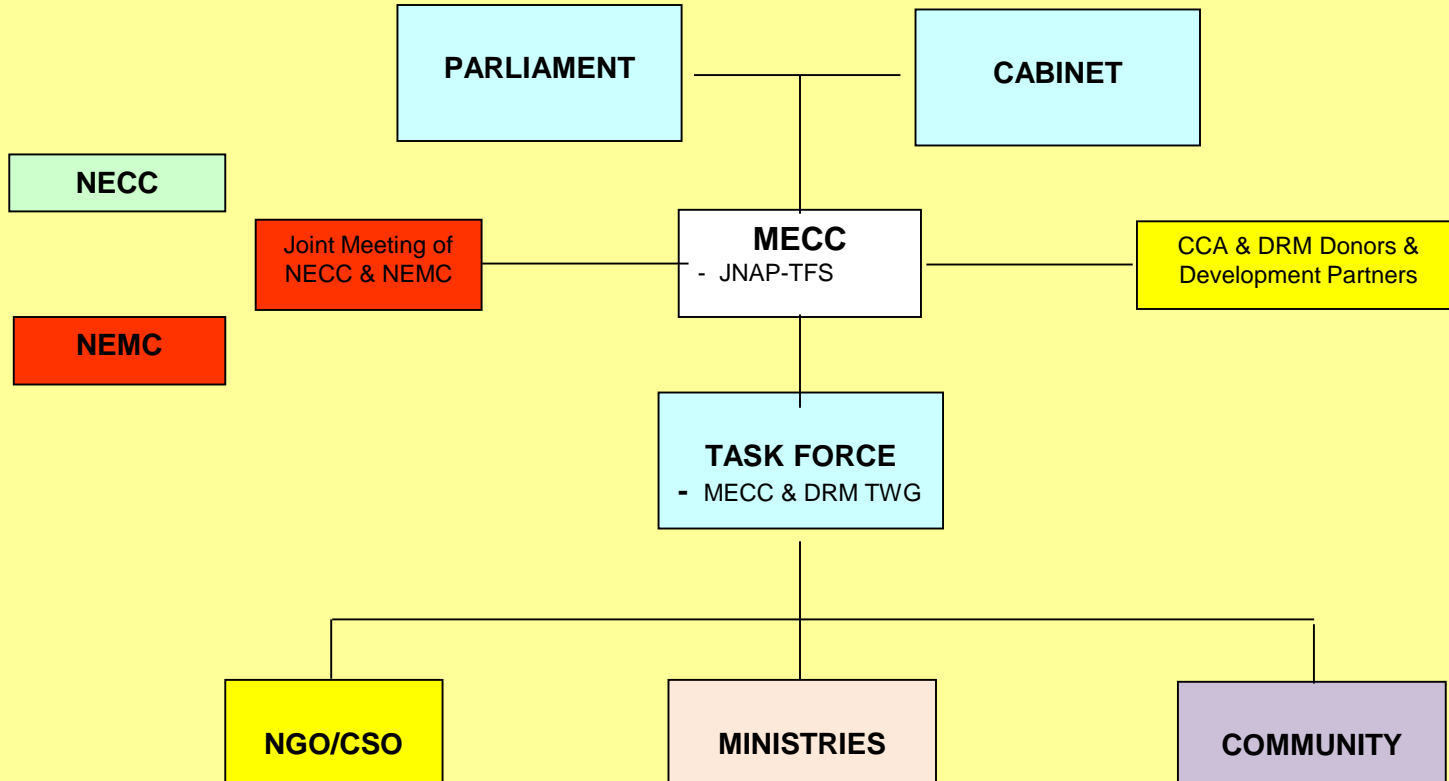
ADB



Government of Tonga

CIF CLIMATE  
INVESTMENT  
FUNDS

## 6. JNAP Management Structure



## 7. Linkages with Regional Track

### Regional SPCR:

- builds on the work already undertaken in Tonga in integrating CCA and DRR into national planning processes, including with development partner support
- Provides additional capacity support to implement Tonga SPCR activities (Regional Technical Support Mechanism)

### Tonga SPCR:

- provides best practices and lessons learned for sharing with other Pacific countries

ADB



Government of Tonga

CIF  
CLIMATE  
INVESTMENT  
FUNDS

# *Strategic Program for Climate Resilience (SPCR) for Tonga*

## *5. Questions and Comments*

ADB



Government of Tonga

CIF CLIMATE  
INVESTMENT  
FUNDS



# Meeting of PPCR-SC 30<sup>th</sup> April 2012, Washington, D.C., USA

Pacific Regional: Strategic Program for  
Climate Resilience (SPCR)





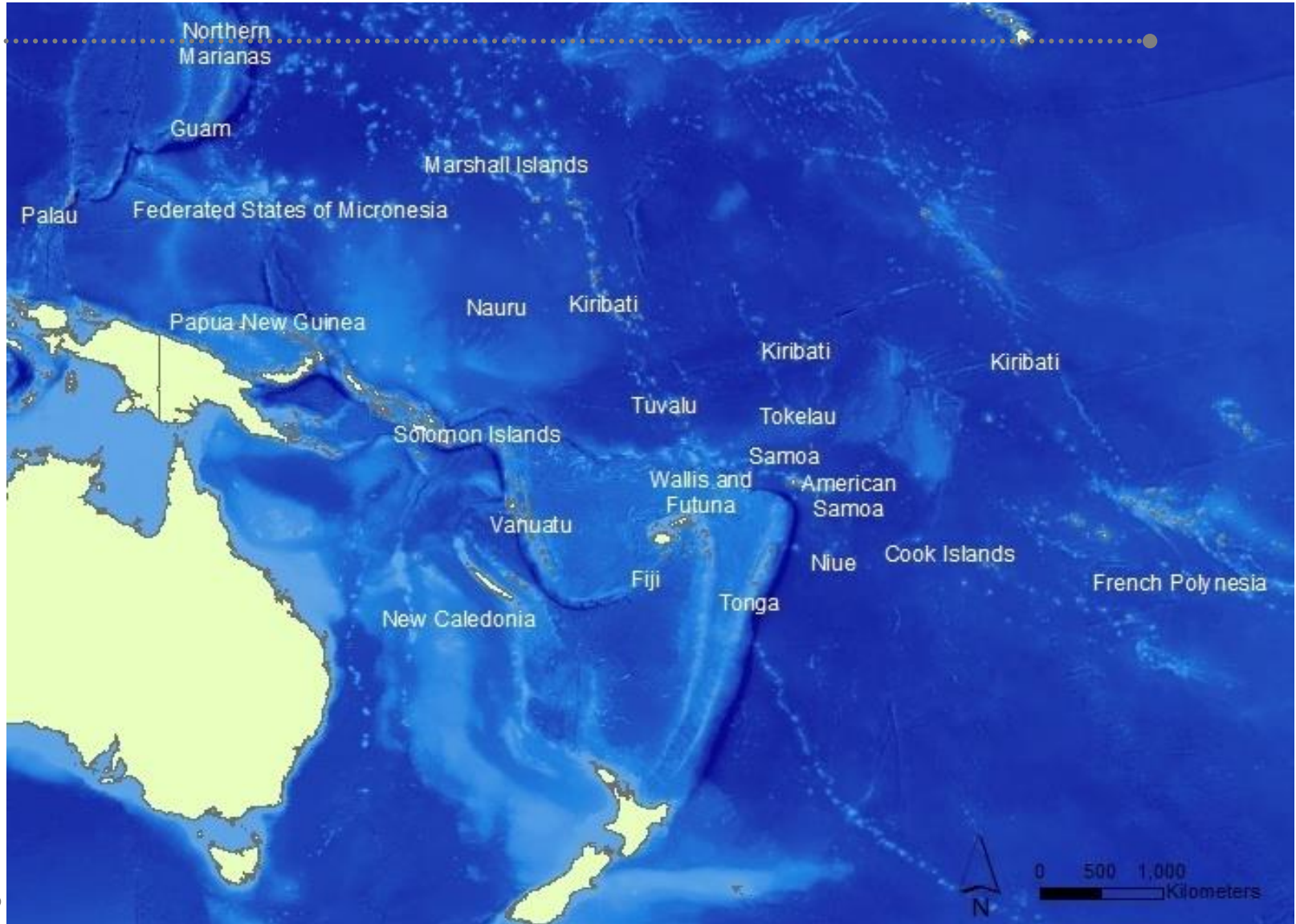


# Outline

- I. Introduction**
- II. Priority areas for Transformational Change**
- III. Proposed Investments**
- IV. Institutional Arrangements for implementation**
- V. Linkages with Pacific Pilot National Track**



# Our Pacific Region





# I. Introduction

- **Complements ongoing regional efforts** to integrate climate change adaptation (CCA) and disaster risk reduction (DRR) into national and sector level planning processes
  - **Supplements the PPCR country track SPCRs** (Samoa, Tonga, Papua New Guinea)
  - **Consistent with regional priorities** identified by countries (PIFAC/Pacific Plan)
  - **Cognisant of, and adds value to, other CC support** being provided to countries
- Focus on activities that are **best implemented at a regional level**
  - **Economies of scale** achieved through regional approaches
  - Facilitates **replication and scaled up at national level** in other countries
- Main target is the **11 Pacific Island countries** that do not have PPCR national tracks
- **Reflects outcomes of multiple broad-based consultations** at the regional and national level since March 2010



## Linkages with non-PPCR activities

- Important to have **strong links between PPCR and other CCA/DRM activities underway**
  - *PPCR regional track can provide* means of bringing several streams of activity together to facilitate transformational change
  - **Leverages considerable co-financing and parallel funding**
  
- **Key regional initiatives** include:
  - International CC Adaptation Initiative (SPC/SPREP)
  - Coping with CC in the Pacific Region (SPC/GIZ)
  - Pacific Adaptation CC Program (SPREP/UNDP)
  - Increasing Climate Resilience of SIS (SPC/EU)
  - Pacific Australia CC Science and Adaptation Planning (Aust)
  - Building Safer, More Resilient Communities in the Pacific Region through DRR (SPC)
  - Pacific Catastrophic Risk and Financing Initiative (SPC/WB/ADB)
  - Pacific Islands Climate Adaptation Project (SPC/SPREP)



## II. Priority Areas for Transformational Change

### Priorities identified in consultations and analysis:

- **Build capacity** at regional, national, sector and local levels;
- **Facilitate access to climate finance**; and
- **Improve coordination** between CCA, DRR, and development practitioners

### Overall program objective:

“More effective integration and implementation of CCA and DRR measures in Pacific Island Countries to enhance climate resilience”



**Component  
1**

**Mainstreaming  
CCA and DRM  
into national  
development  
policies and  
plans**

**Component  
2**

**Identify and  
Implement  
Practical  
CCA and  
DRM  
knowledge  
and  
experience**

**Component  
3**

**Building and  
supporting  
PICS  
capacity**



## **Component 1: Support and improve mainstreaming of climate change adaptation (CCA) and disaster risk reduction (DRR) in national development policies and plans**

- **Strengthen national and regional capacity** to identify, access, analyse, disseminate and apply relevant information for adaptation strategies;
- **Strengthen national and regional data management capabilities;**
- **Establish new and strengthen existing mechanisms** to mainstream CCA/DRR into national planning and finance programming.

### **Outcome:**

CCA/DRR integrated into plans and strategies; tailor made tools developed and applied; enhanced capacity for CC mainstreaming at the national level

Suggested allocation: US\$2.6m



## Component 2: Identify and implement practical climate change adaptation and disaster risk reduction knowledge and experience

- Develop and share of **knowledge products** on successful adaptation/risk management approaches in fisheries, agriculture, water and coastal zones
- Identify and implement of practical adaptation responses for suitable for **replication and scaling up**;
- Integrate culture, youth and gender issues; and
- Develop, test and share **innovative CCA/DRR practices in target sectors**.

**Outcome:** Enhanced infrastructure resilience and improved food security

Suggested allocation: US\$6.4m





## Component 3 : Build and Support PICs capacity in CCA/DRR

- Provide technical and advisory services for PICs to strengthen PICs capacities to respond to climate change
- Develop a rapid response fund to support the deployment of TA requested by member countries

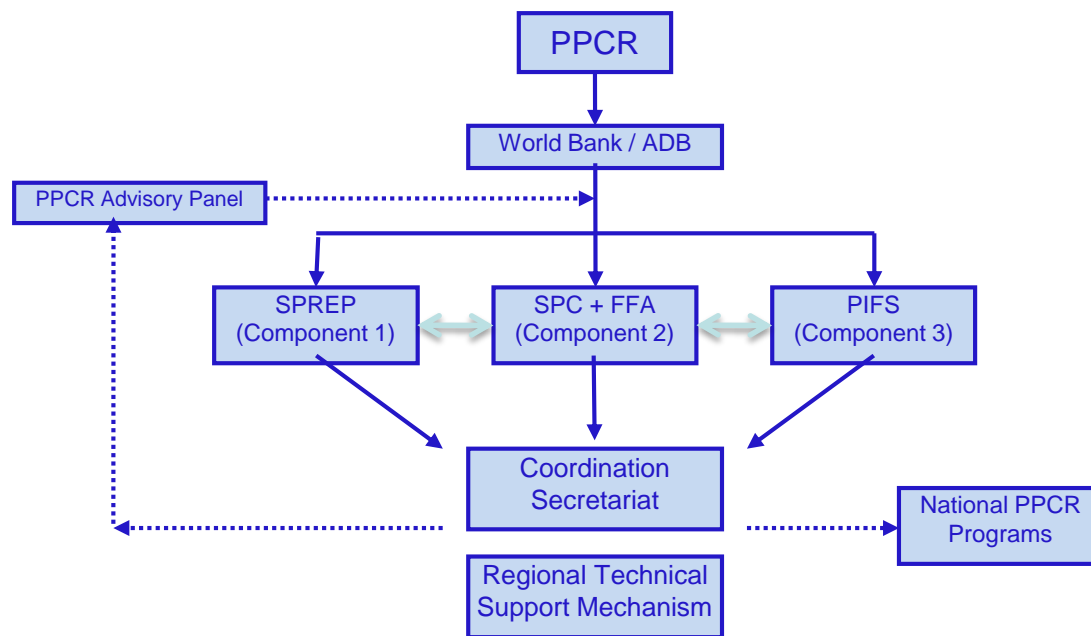
### **Outcome:**

Enhanced technical support to PICs through Regional Technical Support Mechanism and existence of resources to support rapid response to meet PIC needs

Suggested allocation: US\$1.4m



# V. Institutional arrangements for implementation





## IV. Linkages with PPCR National Tracks

Pacific regional SPCR pilot will -

- Draw on successful national track work in integrating CCA and DRR into national planning processes and disseminate to other countries
- Disseminate national track experiences and lessons learnt on implementing adaptation measures that can be replicated/scaled up in other countries

National and regional track SPCRs will -

- work to strengthen CCA/DRR capacity in key sectors, civil society, private sector, and in vulnerable communities;
- provide financing to undertake vulnerability assessments and implement actions





## IV. Questions and Comments

**Thank you**

