

PPCR Pilot Countries Meeting

COUNTRY COORDINATION: ST. VINCENT & THE GRENADINES

Ms. Ronette Jordon

Ministry of Finance and Economic Planning, SVG

May 2, 2013 – Washington D.C., United States

Introduction

- **Phase 1:**

- Completed and all identified outputs and outcomes were achieved.
- 97% of the US\$277,440 allocated expended.

- **SPCR: Implemented under RDVRP**

- Approved in April 2011 : US\$7m in grants; US\$3 m in concessional loans
- Implemented as one project with 4 components

Introduction cont'd

- **SPCR: Implemented under RDVRP**

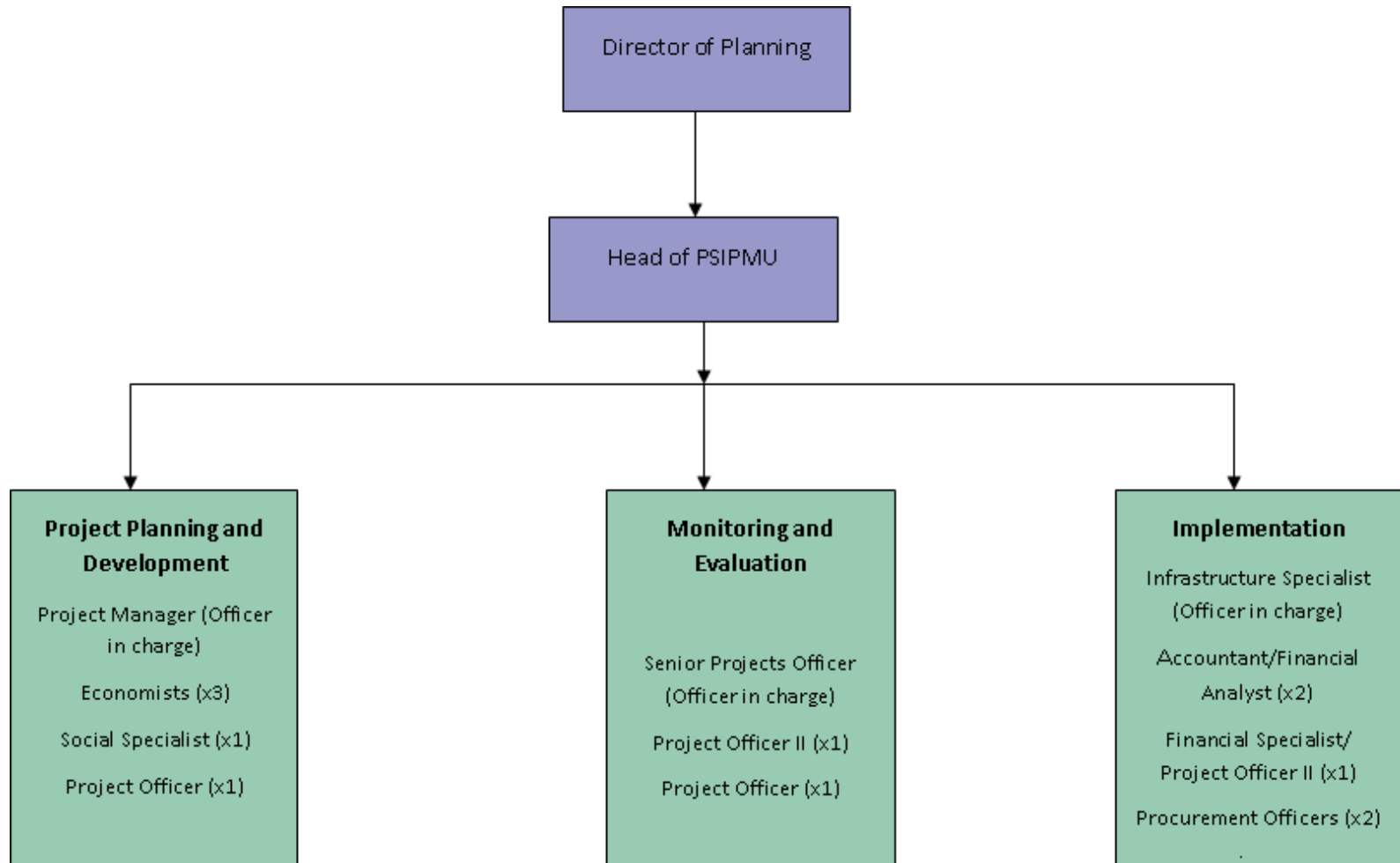
- 4 Components: Activities include:

- The study 3 primary watersheds using a ridge to reef approach;
 - Capacity of core agencies will be enhance through training and the acquisition of equipment (hydromet; GIS etc);
 - Policy and legislative reform;
 - Improvement to data management capabilities.

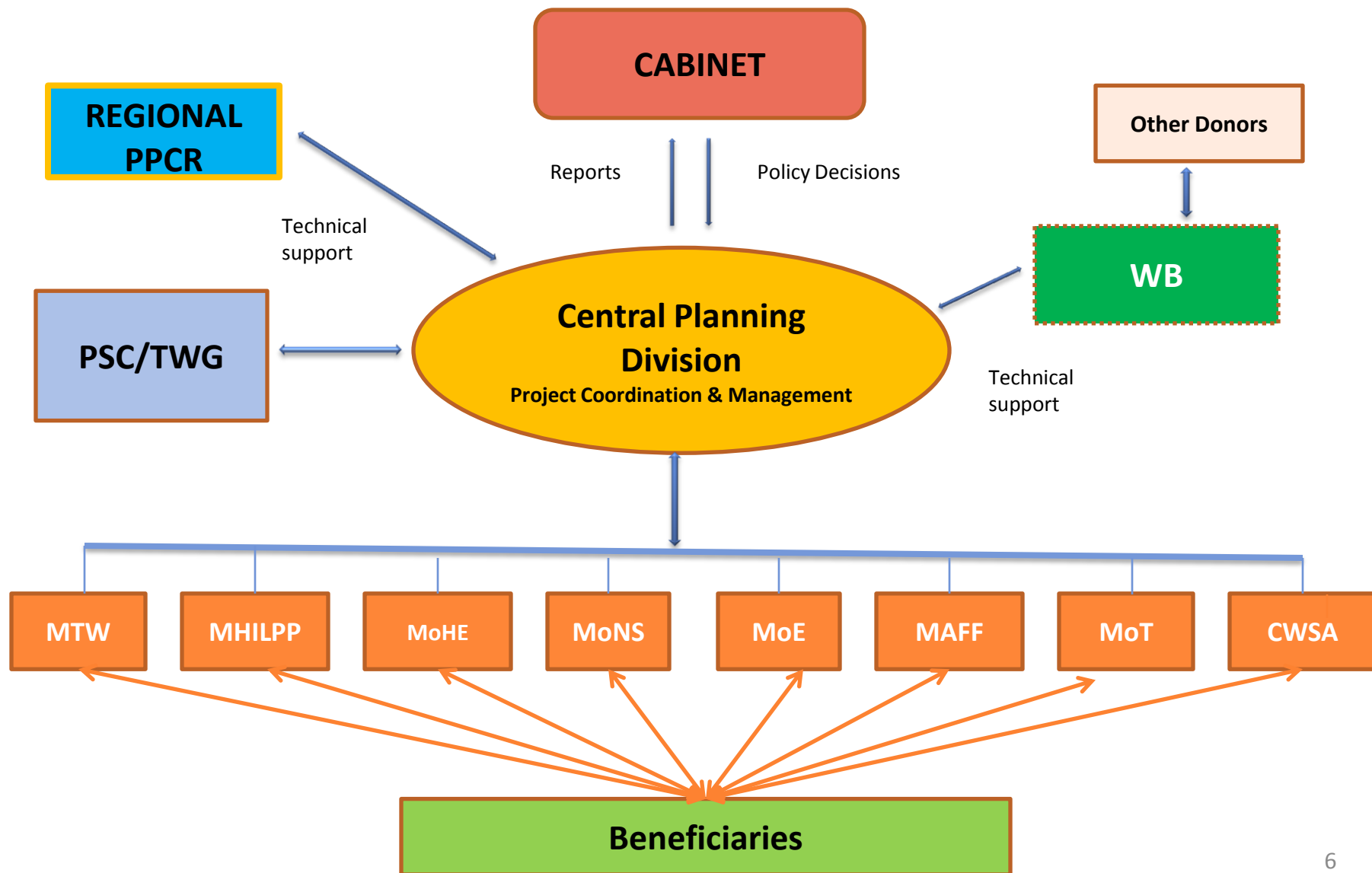
Coordination/Management Entity

- **The Public Sector Investment Programme Management Unit (PSIPMU)** within the Central Planning Division (CPD) is Ministry of Finance and Economic Planning is the Central Coordinating/Managing Entity
 - Staffed with: Financial Management and Procurement Officers; Technical Officers ; M&E Officers and Administrative Officers
- **Partner agencies**

Coordination/Management Entity



RDVRP Institutional Arrangements



Steering Committee

Project Steering committee

- Assess project progress.
- Provide advice and guidance on issues facing the project.
- Assist with resolving strategic level issues and risks.
- Use influence and authority to assist the project in achieving its outcomes

Technical Working Group

- Provides technical guidance

Operational Examples of Interaction

- Joint execution of activities – GIS Training by MoHILP
- Active involvement of partner agencies in preparation of tender documents – scoping etc.
- Harmonization of activities – Similar CDB funded , ROC (Taiwan) funded and RDVRP funded synchronized
- Mainstreaming of RDVRP activities into agencies' work plans - NEMO

Learning from Implementation

Challenges

- Maintaining momentum.
- Keeping track of similar activities being implemented outside the mainstream.

Lessons Learned

- Partner agencies' full participation is critical.
- Roles and responsibilities must be clearly defined.
- Harmonisation of similar activities across agencies is critical and increases operational efficiency.
- Be sure of partner agencies' ability to deliver

Discussion

