



Resilience: Insights from the Field

TCLP Workshop Session 2 Breakout

Where can transformational change concepts and practices address climate change challenges?

Tuesday, May 25, 2021

Resilience Breakout Objectives

- Locate transformational change concepts in a real case studies, and identify emergent action to inform the concepts
- Distill insights to identify dimensions of transformational change and how they advance transformational change
- Provide interactive opportunities to learn from case studies while drawing on their own experiences and knowledge
- Begin to identify what products and processes need to be developed to further contribute to transformational change



Resilience Breakout Speakers



SIMONE VERKAART
Global Resilience Partnership



SIRAZ HIRANI
Gujarat Mahila Housing Sewa Trust



COLLEEN MCGINN
ISET International (facilitator)



The Global Resilience Partnership

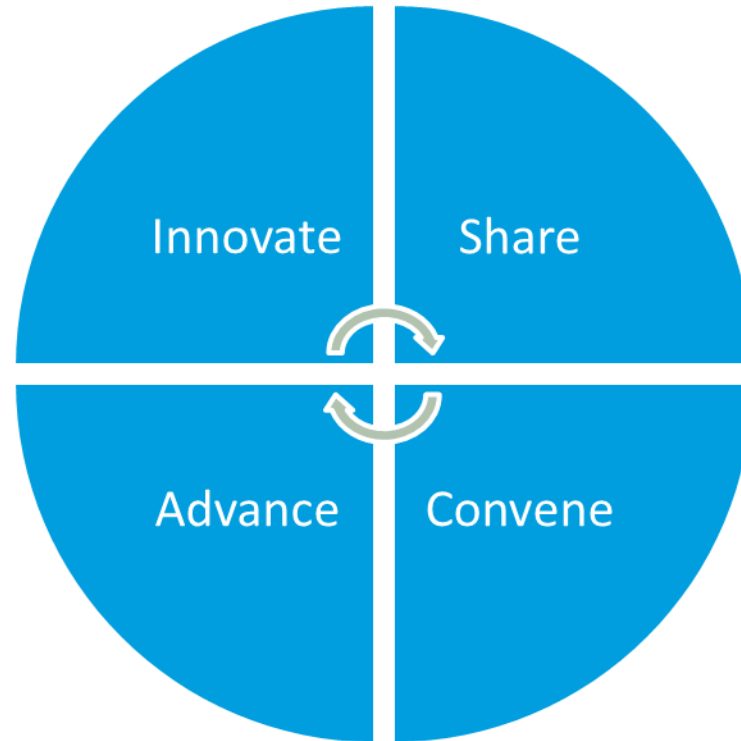
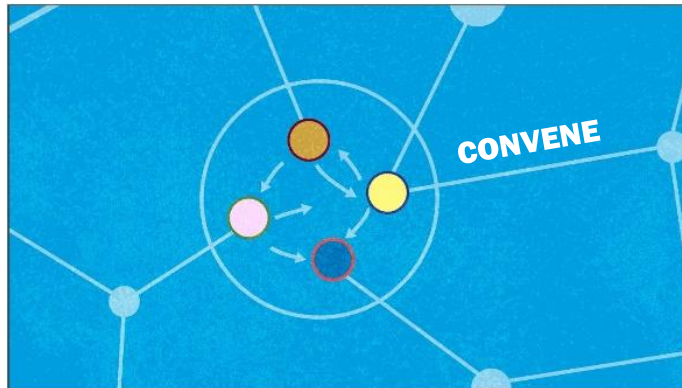
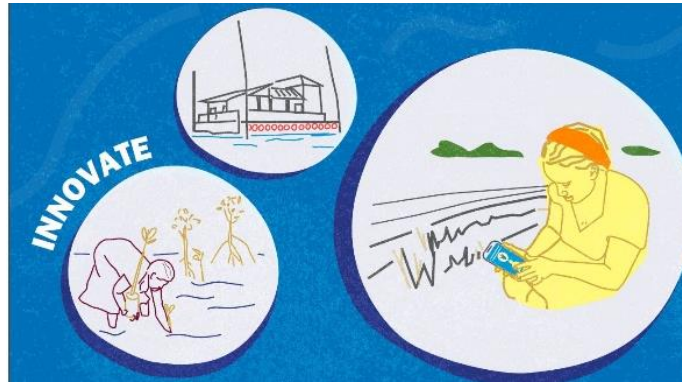
Innovate | Share | Convene | Advance

Global Resilience Partnership



Innovate | Share | Convene | Advance

What we do



Innovate | Share | Convene | Advance

Innovate: GRP Challenge Competitions



38 challenge projects representing **18** countries across **5** main intervention areas:



Nature based solutions



Empowering marginalised groups



Making finance and markets inclusive



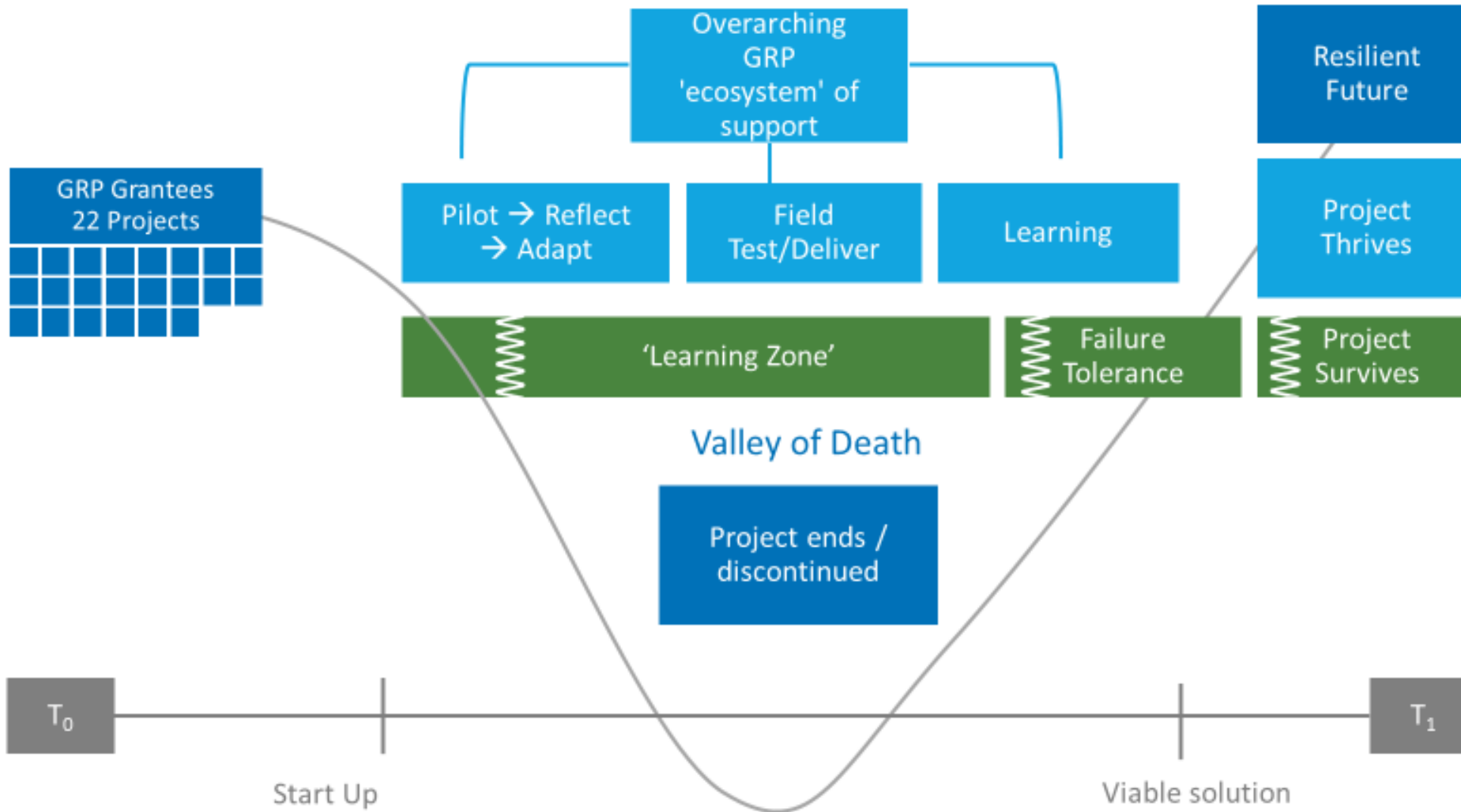
Information & Technology



Low cost infrastructure

Innovate | Share | Convene | Advance

Innovate: GRP eco-system of support





Innovate | Share | Convene | Advance



MAHILA HOUSING SEWA TRUST

Dignified Home, Dignified Work, Dignified Life

Devising local coping mechanisms and adaptation technologies to build climate-resilience capacities of urban poor in South Asia

Siraz Hirani

Email: siraz@mahilahsg.org
Mahila Housing Sewa Trust (MHT)
INDIA



Focusing on women-led development, MHT contributes towards:



Mahila Housing Trust (MHT)

Mission: To organize and empower women working in the informal economy and provide them technical services / capacity building to secure better habitat, environment, & basic services.



MHT programs include



Water, Sanitation,
and hygiene



Sustainable Energy
and Climate Change
Resilience



Affordable Housing
and Land Rights



Livelihoods and Skill
Development



Democratic Urban
Governance

Key issues in Indian Urban context

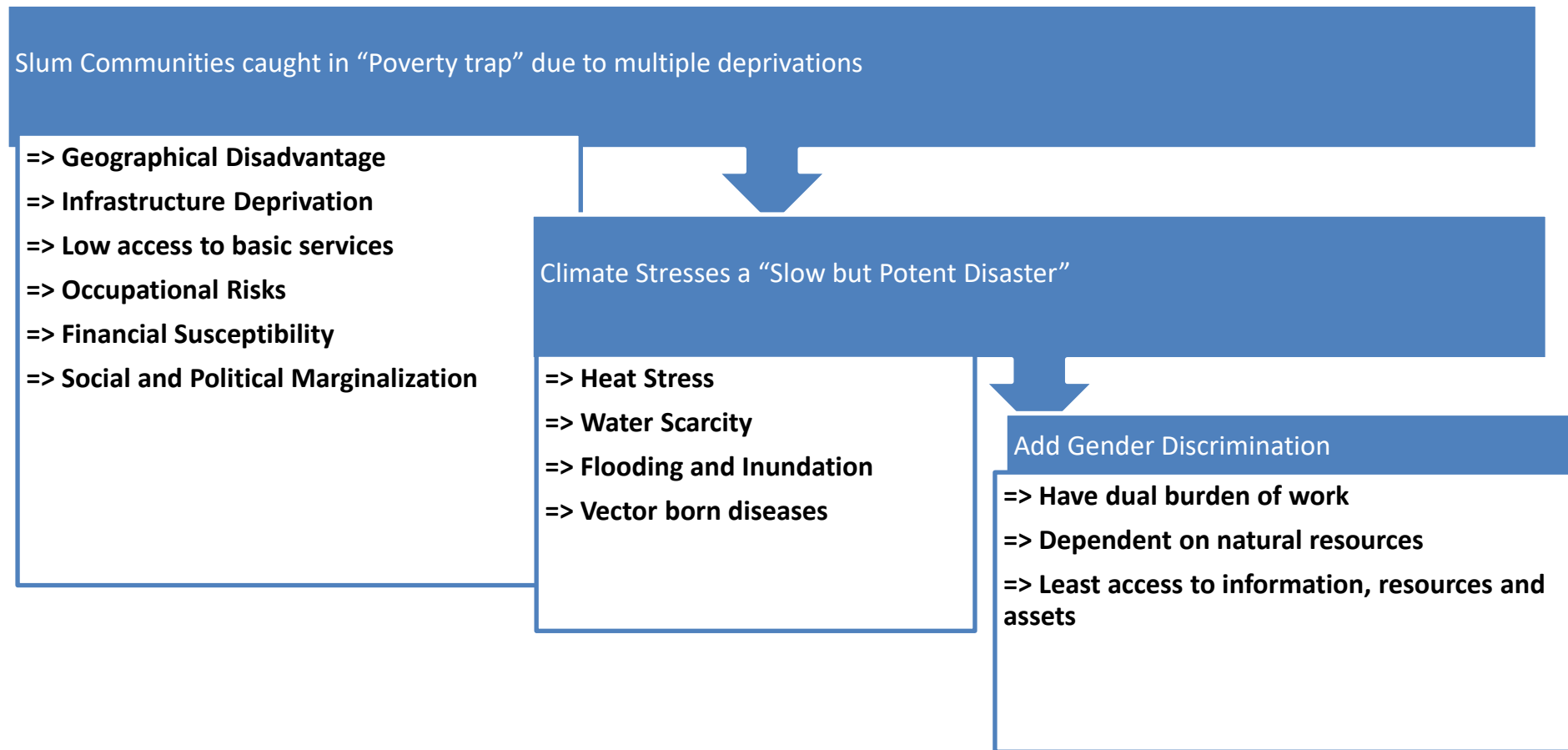
- In the Indian context, the accelerated increase in the urban population, especially as a result of migration from rural areas, has led to **significant inequities across socio-economic indicators**.
 - Around **40% of city** residents in India reside in ‘slums’ **in unsanitary and hazardous living conditions, lacking access to safe shelter, water and sanitation and affordable energy**.
 - Their status as **“Informal Citizens”** prevents them from accessing basic services and excludes them from public infrastructure investments.
 - Assessing the current implementation of constitutional provision in Indian cities, **there lacks ‘invited space’ for citizen participation** especially for the marginalized urban poor population
-

Climate Change and Slum Dwellers : Key Issues Identified

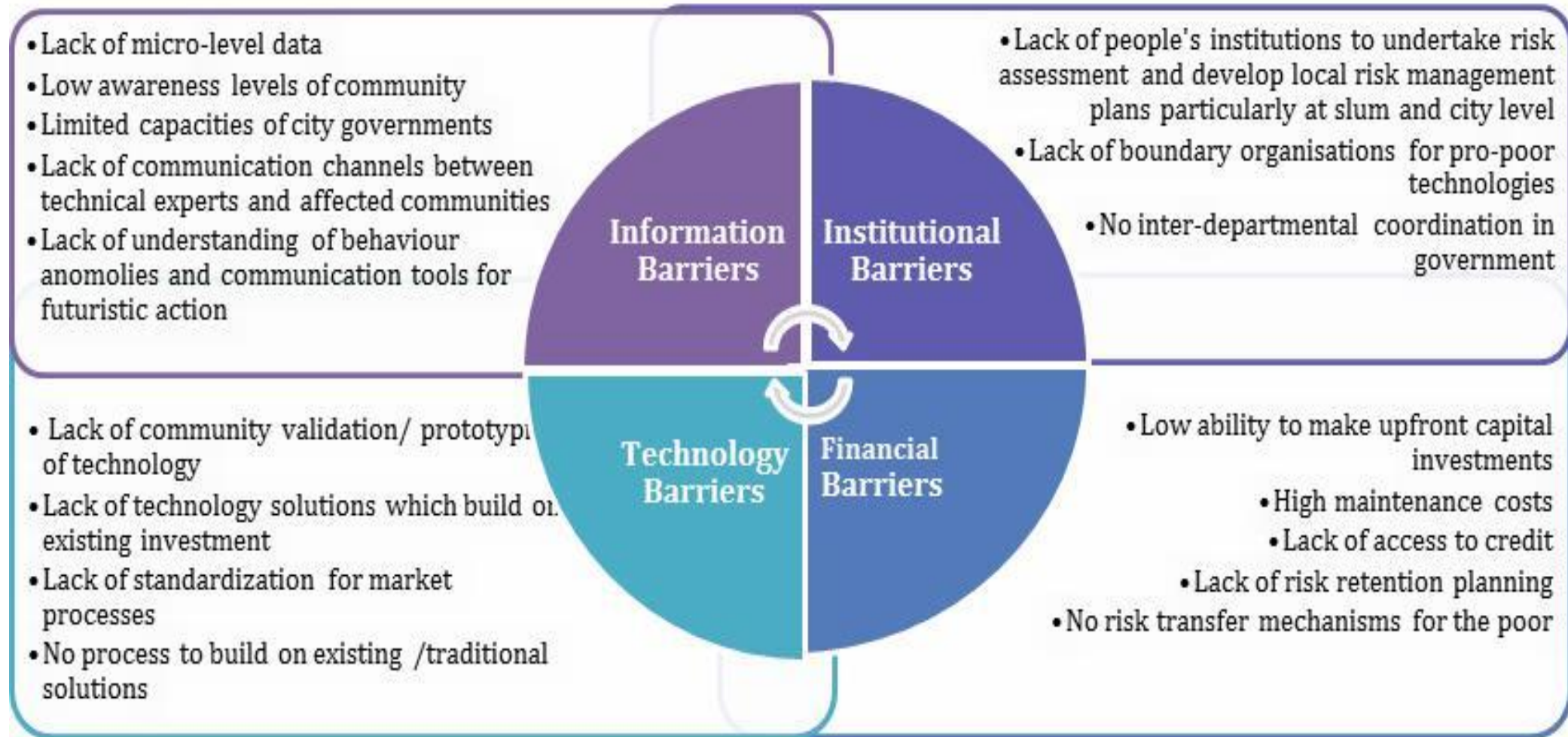
Women from Slum Communities are most vulnerable to Climate Change while having least adaptation capacity

Ample initiatives for rural poor
Urban poor still facing challenges

Inadequate urban planning
communities have inhibited recognition as city residents



Barrier to Climate Resilience

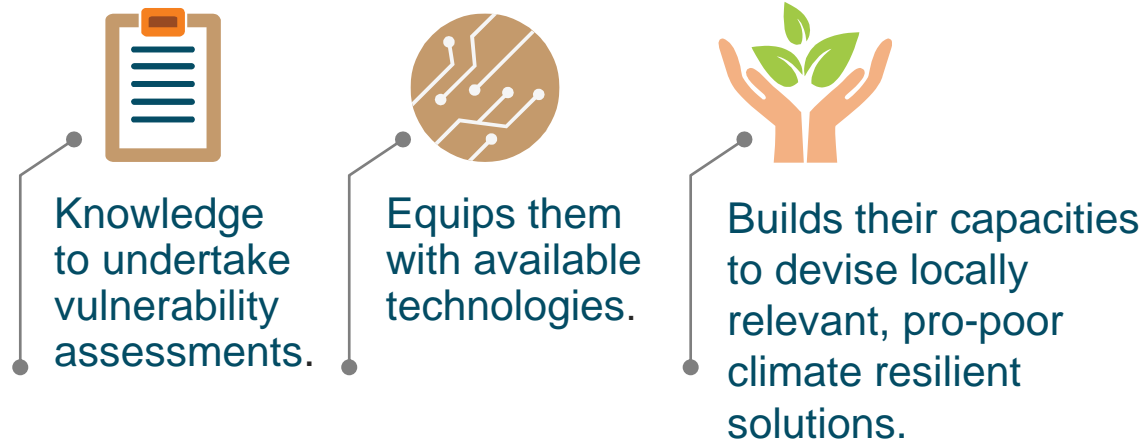


Theory of Change : Building Climate Resilience of Urban Poor

- If the urban poor are provided with the requisite knowledge to undertake vulnerability and risk assessments and are equipped with available resilient-technologies, they will be able to devise and implement locally relevant and pro- poor climate resilient solutions.
- If the poor are empowered to implement their own resilience plans, and the institutional mechanisms representing their voices are in place, they will be able to better influence city planning and governance on pro-poor adaptation and resilience action.

MHT approach

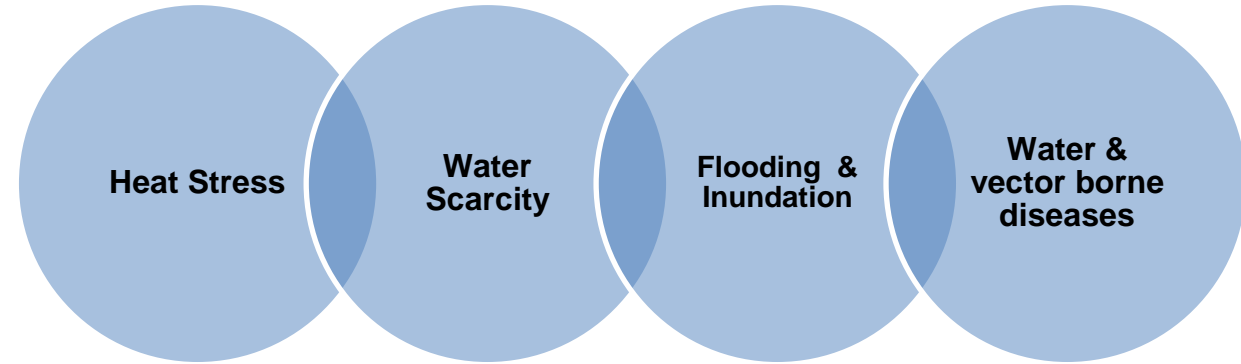
MHT also provides the urban poor with



MHT empowers community-based organizations to



Proof Of Concept : Project Supported by GRP



3 Countries

7 Growing Cities

100 Slum Settlements

1,200 Women/Youth Leaders

25,000 Most Vulnerable Families



**GLOBAL
RESILIENCE
PARTNERSHIP**

CONVENED BY THE ROCKEFELLER FOUNDATION AND USAID

Project Components

Targeted Training and localized communication strategies for behavior change.

To provide the most relevant information and create incentives for communities to seek technical knowledge and adopt futuristic thinking.

Piloting and community validation of technical solutions related to stresses.

To meet the needs of the poor, especially women.

Designing and incubating financial products.

To support the poor to make investments in resilience solutions.

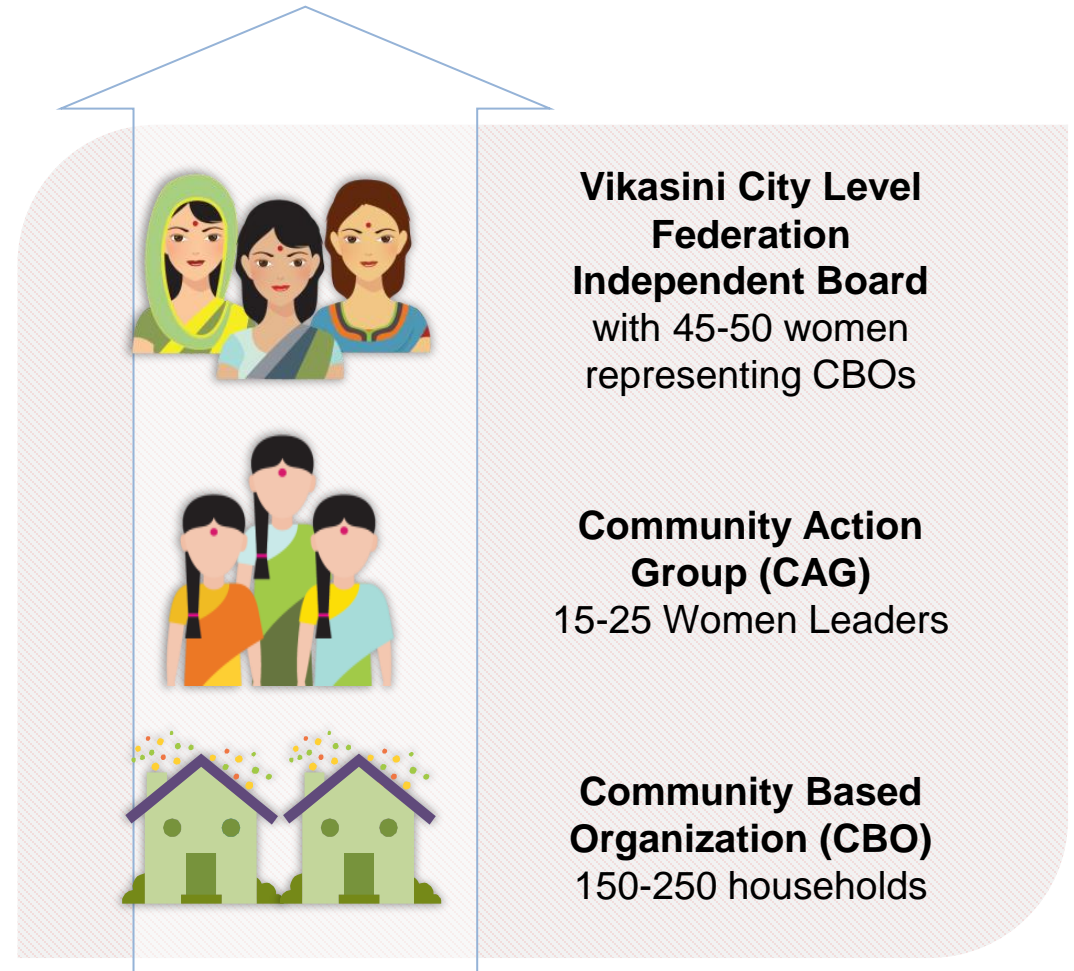
Creation of strong Institutional Partnership

For joint action between all knowledge stakeholders: community members, government officials, service providers, technical experts, and other local institutions.

Building Social Capital

Mobilizing and organizing communities (especially women), developing their social capital and empowering them to address the social, physical, and environmental issues they face, and take charge of their own improvement process, is central to MHT's work.

We facilitate formation of Community Based Organizations (CBO) and Community Action Groups (CAG) at slum level. The CBOs coalesce under a umbrella body called Vikasini, a city level federation of slum dwellers.



Piloting Solutions



Climate Resilient solutions demonstrated



Families took part in field schools organized for validation



Special loan product for successful/acceptable solutions



Creation of Strong Institutional Partnerships



- Multi-stakeholder events organized in each project city
 - ✓ Community Leaders
 - ✓ Local Administration/Government
 - ✓ Academicians/Scientist
 - ✓ Social Entrepreneurs
 - Identification of over 280 local experts and stakeholders
 - Major City level Partnerships:
 - ✓ Ranchi (Jharkhand) – Water Management Plan
 - ✓ Bhopal (MP) – Malaria Eradication Plan
 - ✓ Ahmedabad – Heat Action Plan & Monsoon Action Plan
-

Key Outcomes

27,227 women reached through multiple communication and training activities

102 women have completed marketing training and 25 are working as climate saathis.

3728 households bought climate resilience technological solutions

8,165 women demonstrate change in knowledge seeking behavior

27,055 families in 107 slum communities through **114 CBOs/ CAGs**

71 CAGs already active in resilience building- 24 have initiated systematic resilience action

Increased sphere of influence of 1,604 women leaders on local policies through five Vikasinis; City level Federation promoted in Ahmedabad, Bhopal, Jaipur, Ranchi and Bhubaneswar.

- I. 12 CAGs have successfully facilitated access to basic services in their locality
 - 2 in Ahmedabad get access to municipal sewage connections and paved internal roads within the locality
 - 9 in Jaipur got water and sewage connections
 - 2 in Bhopal and one each in Ranchi and Bhubaneswar, complained of water contamination and got access to better water supply
 - II. Vikasini Ahmedabad shared their project insights, some of which have been incorporated in the City Heat Action Plan 2017.
 - They have also been invited by a number of renowned local academic institutions like IIPHG, CEPT, GIDR; civil society organisations; and private sector agencies like DBS for providing inputs for water, sanitation, affordable housing, climate resilience, and slum development deliberations.
 - III. Vikasini Bhopal and Ranchi have also been invited by local city governments and have been collaborating with them on the issues of vector borne disease management and rain water harvesting.
 - IV. Vikasini Jaipur is partnering with local CSOs on issues of women's rights and participation in governance.
 - V. Vikasini Bhubhaneshwar has just gained edifice and is supporting its CAGs to build a stronger constituency at the city level.
-

COVID-19 Response

Activities	Total
Number of beneficiaries reached - COVID-19 Awareness (Individual)	564272
No. of beneficiaries reached - Govt. Schemes Awareness (Individual)	308536
Food Support provided (Number of meals)	13836055
Food Support provided (Homeless Individual)	12546
Number of meals served under IPAC	10718
Safety Kits Provided (Individual)	36212
Government subsidies' mobilized (INR)	13267249
Direct Bank Transfer / Cash Support (Individual)	627
Food Support provided (No. of Families supported for one month)	46198

Relief efforts on field were led by the Community Action Groups
(Needs Assessment, Procurement & Distribution)

Thank You

Siraz Hirani

Email: siraz@mahilahsg.org

Joining the TCLP Workshop Tomorrow

Tomorrow the workshop will begin in these small groups.

<https://rossstrategic.zoom.us/j/96609824410>

You will join the workshop with a different link:

Meeting ID: 966 0982 4410



**See you back in the main
meeting in a few
seconds!**



Resilience: Moving from Emergent to Advanced Transformational Change

TCLP Workshop Session 3

Wednesday, May 26, 2021



Resilience Session 3 Objectives


- Identify insights to advance thinking and action on transformational change and resilience, drawing from case studies and participant knowledge
- Identify powerful questions that can equip practitioners to consider key dimensions of transformational change in the design, implementation, and evaluation of programs and projects
- Begin to identify what tools, processes, and experimentation will advance transformational change

A few technical reminders...

 The meeting is being recorded.


 Mute your microphone while others are speaking.

 Raise your virtual hand to contribute to the conversation.

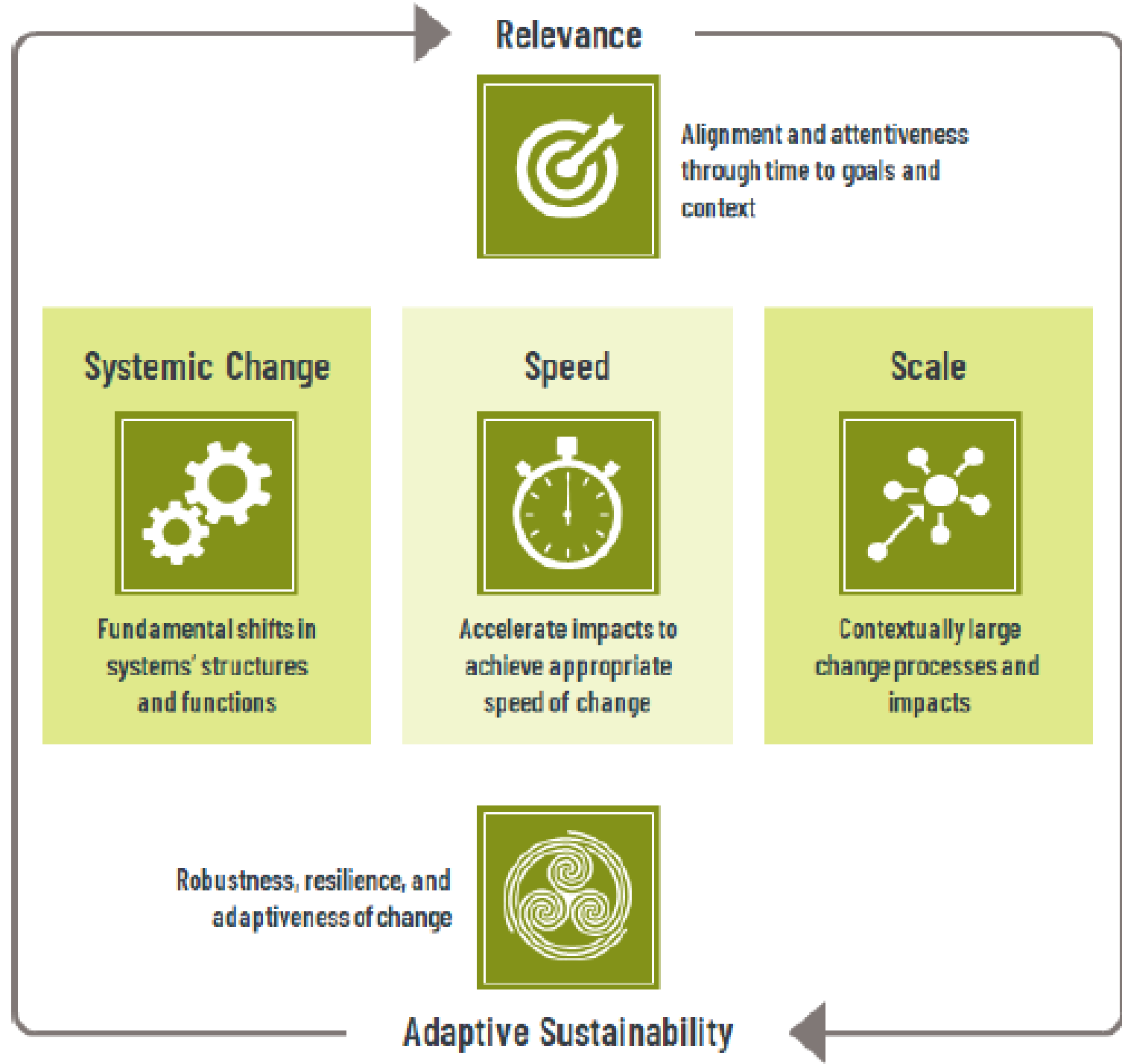
 Allow everyone the chance to speak and listen actively to understand others' views.

 Chat directly to **Lauren Dennis** if you need technical assistance.

What is one key takeaway you have from yesterday's workshop sessions?

 Start presenting to display the poll results on this slide.

TCLP Dimensions of Transformational Change in Climate Action



Small Group Discussions in Breakout Rooms



Small Group Work in Mural

- You will join a breakout room with a few other participants
- Together, you and your group will focus on two activities in Mural:
 - First, review and add to the **Key Insights for Advancing Transformational Change Related to Resilience** section drawing from the case study shared yesterday and/or your own experiences and knowledge **5 min**
 - Second, identify **Powerful Questions to Inform the Movement from Emerging and to Advanced Transformational Change** in the design, implementation, or assessment of Resilience initiatives and projects, using the dimensions of transformational change as a framework **25 min**

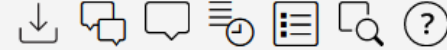
Mural Bird's Eye View

3 Resilience



3

SHARE



All changes saved

TCLP May Virtual Workshop | Session 3: Moving from Emergent to Advanced Transformational Change

RESILIENCE Breakout

Facilitated by: Colleen McGinn, ISET International

1 GET FAMILIAR WITH NEURAL



2 Key Insights for Advancing Transformational Change (5 minutes)

What insights related to advancing transformational change did you draw from the [insert case study, e.g., Turkey energy efficiency case study] and other [insert breakout focus, e.g., energy sector] transformation experiences presented yesterday in Session 2? Type insights into gray sticky notes below.

If you'd like to show agreement with a thought below, move a dot to that sticky note.



4 OPTIONAL: Ideas for Using these Questions

What tools, processes, and experimentation need to be developed to support use of these types of questions to support the design, implementation, and evaluation of initiatives, programs and projects with transformation in mind? Type thoughts into gray sticky notes below.

If you'd like to show agreement with a thought below, move a dot to that sticky note.



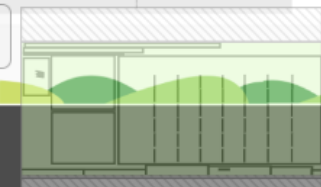
3 Powerful Questions to Inform the Movement from Emerging Advanced Transformational Change (25 minutes)

What kinds of questions related to each dimension should climate finance program and project designers and implementers be asking to support processes and outcomes to move toward more advanced transformational change in the area of Resilience? For general questions that guide the movement from emerging to more advanced transformational change please use light yellow sticky notes in the "General Questions" row at the bottom.

If you'd like to show agreement with a thought below, move a dot to that sticky note.



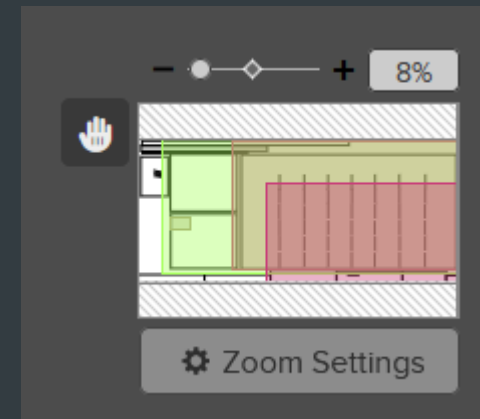
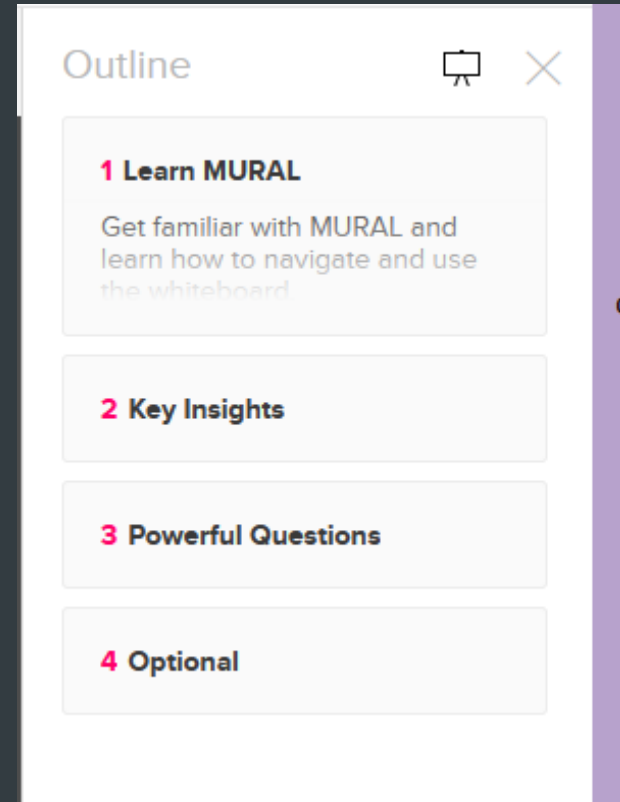
	Breakout 1	Breakout 2	Breakout 3	Breakout 4	Breakout 5	Breakout 6	Breakout 7	Breakout 8
Relevance Alignment and interdependence through time to goals and context.								
Systemic Change Fundamental shifts in systems structures and functions.								
Speed Accelerate impacts to achieve aggregate speed of change.								
Scale Consistently large change processes and impact.								
Adaptive Sustainability Resilience, resilience, and adaptiveness of change.								
General Questions To guide the movement from emerging to advanced transformational change.								



4%

Using Mural

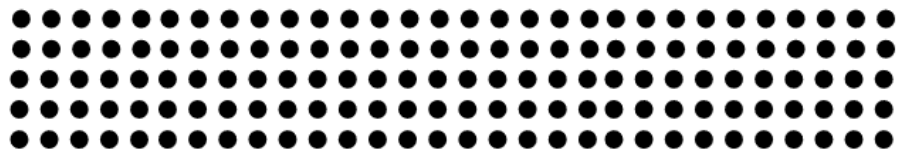
- Use the Outline on the right of your screen to easily navigate to specific sections of the Mural board
- To zoom in and out, either use your mouse or the tool on the bottom right of your screen (which also allows you to pan around the Mural board)




Working in Mural

- Each breakout group will work in one column of the dimensions table
- You can move dots to sticky notes with thoughts you'd like to second, or "upvote"

If you'd like to show agreement with a thought below, move a dot to that sticky note.




Relevance



Alignment and attentiveness through time to goals and context

Systemic Change




Fundamental shifts in system's structures and functions

Speed



Accelerate impacts to achieve appropriate speed of change

Scale


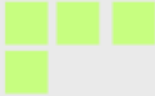


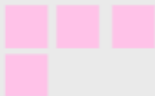
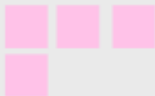




Contextually large change processes and impact

Adaptive Sustainability



Robustness, resilience, and adaptiveness of change

Breakout 1	Breakout 2
	
	
	
	
	

Join Mural Before Joining Breakout Room

Make sure you can open the Mural link in the chat *before* joining your breakout room.

Send a chat message to **Lauren Dennis** if you have any trouble.





Plenary Share-out

Facilitated by Colleen McGinn, ISET International

Rejoin Main Meeting

Before beginning the ten-minute break, please rejoin the main meeting for Session 4 by clicking the link in chat or in your agenda:

<https://rossstrategic.zoom.us/j/95083154844>



CIF



CLIMATE INVESTMENT FUNDS

Investing in the future

