



# Clean Energy: Insights from the Field

*TCLP Workshop Session 2 Breakout*

*Where can transformational change concepts and practices address climate change challenges?*

**Tuesday, May 25, 2021**

# Clean Energy Breakout Objectives

- Locate transformational change concepts in a real case study, and in turn, identify emergent action that can inform the concepts
- **Distill insights** on how to identify dimensions of transformational change and how these dimensions collectively support more advanced transformational change
- **Provide interactive opportunities** for participants to build on case study insights by drawing on their own experiences and knowledge in this area
- **Begin to identify what products and processes** will need to be developed further to support transformational change



# Clean Energy Breakout Speakers



**NEIL BIRD**  
Overseas Development Institute



**ADONAI HERRERA-MARTÍNEZ**  
European Bank for Reconstruction  
and Development



# TURKEY: THE CONTRIBUTION OF THE CLEAN TECHNOLOGY FUND TO ENERGY EFFICIENCY GOALS

Neil Bird, ODI

2021 TCLP May Virtual Workshop



# Turkey's Energy Transition Milestones and Challenges

July 2015



THE WORLD BANK  
IBRD • IDA

Energy & Extractives Global Practice  
Europe and Central Asia Region



LESSONS FROM THE  
CIF EXPERIENCE IN  
SCALING-UP ENERGY  
EFFICIENCY:  
CASE STUDY REPORT



Final Evaluation Report

Evaluation of Transformational  
Change in the Climate Investment  
Funds

Date: 17 January 2019

Submitted by Itad  
In association with Ross Strategic and ICF



Report

# Transformational change in the Climate Investment Funds

A synthesis of the evidence

Neil Bird, Yue Cao and Adriana Quevedo

January 2019

Based on  
secondary  
research

Question: How do you assess transformational change for climate action?

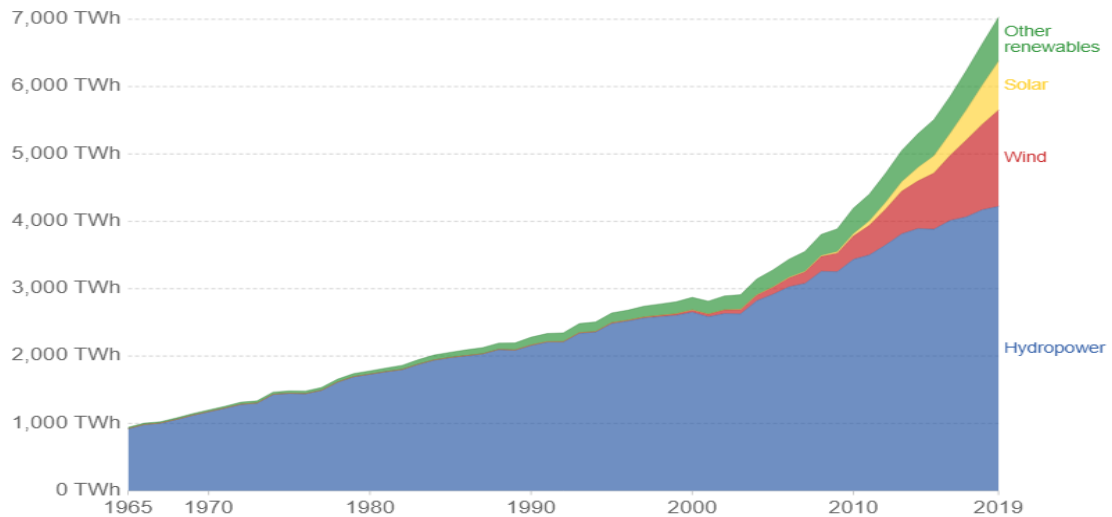
Answer:

- Develop a common understanding of what transformational change in this context means
- Then use the TCLP's five dimensions of transformational change as a lens of enquiry

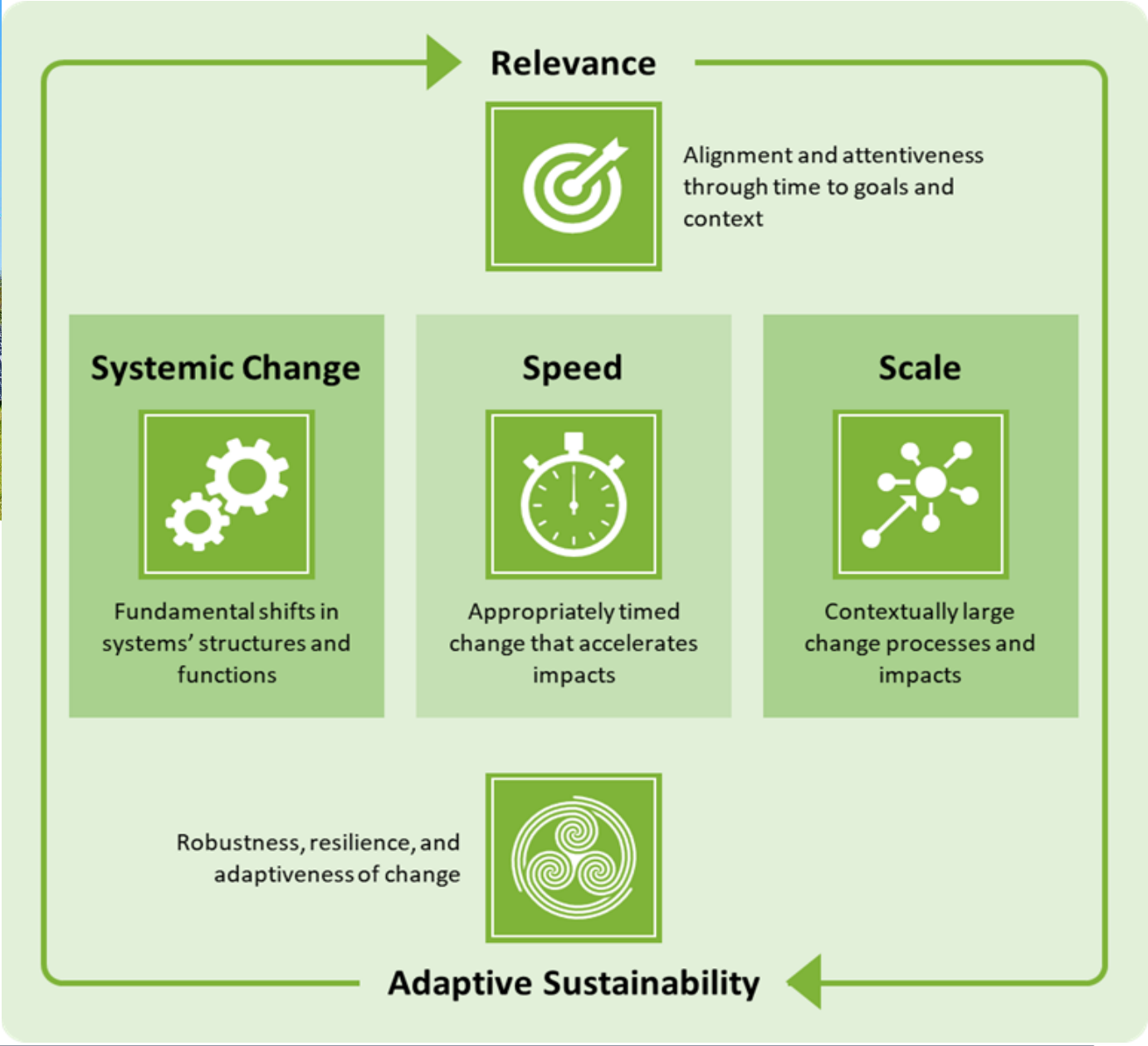


Renewable energy generation, World

Our World in Data



Source: BP Statistical Review of Global Energy  
 Note: 'Other renewables' refers to renewable sources including geothermal, biomass, waste, wave and tidal. Traditional biomass is not included.





# Importance of the case study approach to advance learning

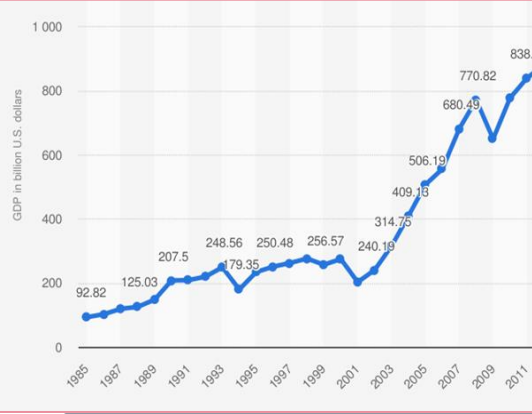
But, it is not an experimental method:

- So obtain inferences, not definite conclusions – qualitative research that aims to improve understanding of what works, when, where and how.





# Case study: context



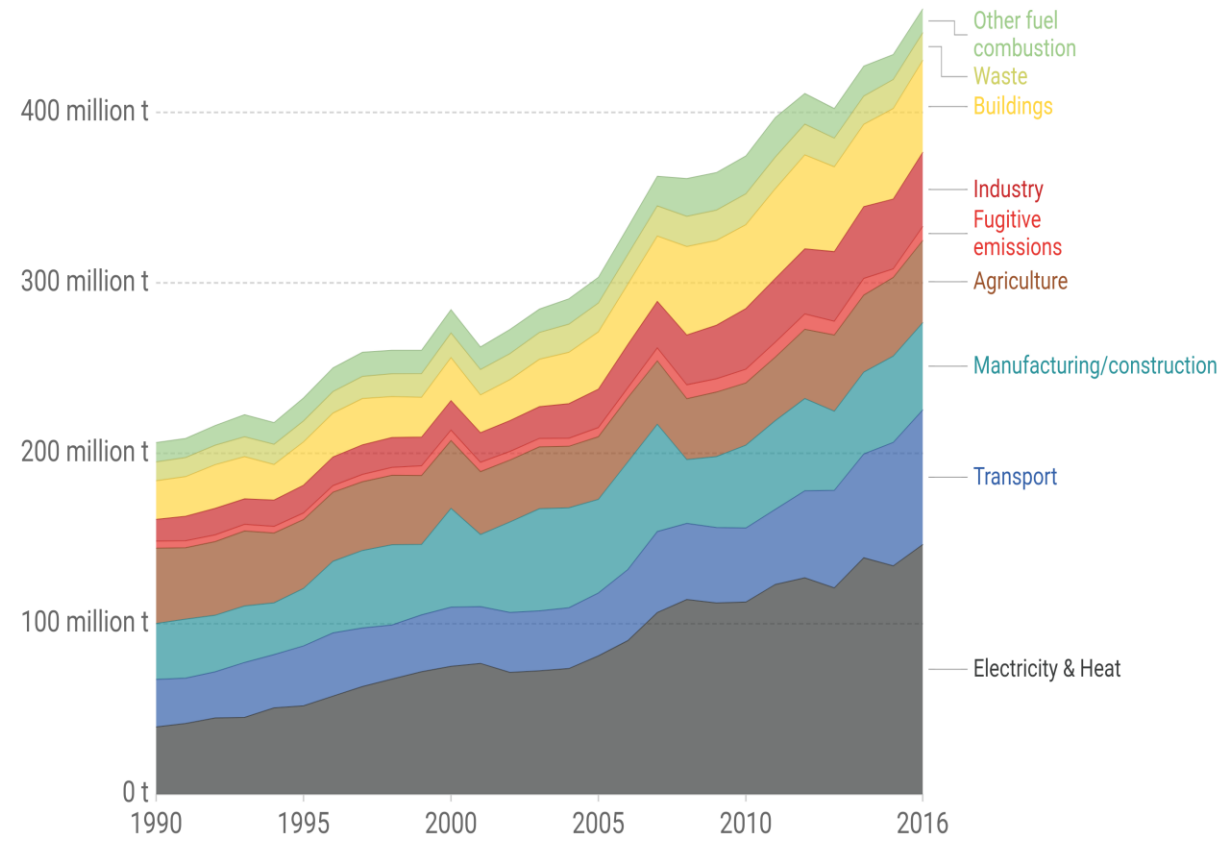
T.R. PRIME MINISTRY • STATE PLANING ORGANIZATION

## NINTH 2007 DEVELOPMENT PLAN 2013

- COMPETITIVENESS
- EMPLOYMENT
- HUMAN DEVELOPMENT
- REGIONAL DEVELOPMENT
- EFFECTIVENESS IN PUBLIC SERVICES

## Greenhouse gas emissions by sector, Turkey

Breakdown of total greenhouse gas emissions by sector, measured in tonnes of carbon-dioxide equivalents (CO<sub>2</sub>e). Carbon dioxide equivalents measures the total greenhouse gas potential of the full combination of gases, weighted by their relative warming impacts.



Source: UN Food and Agricultural Organization (FAO) OurWorldInData.org/co2-and-other-greenhouse-gas-emissions/ • CC BY

# CIF's programmatic approach: the 2009 CTF Investment plan

## Barriers to Change



Financial barriers



Knowledge barriers



Institutional barriers

## Change Partners



**European Bank**  
for Reconstruction and Development



**THE WORLD BANK**  
IBRD • IDA | WORLD BANK GROUP



**IFC** | International  
Finance Corporation  
WORLD BANK GROUP

# Two Energy Efficiency projects



## CSEF



Loan

Equipment Leases

End-Use Customer



Equipment is purchased by leasing company once end-use customer agrees to lease





## Relevance



Alignment and attentiveness through time to goals and context

### Systemic Change



Fundamental shifts in systems' structures and functions

### Speed



Appropriately timed change that accelerates impacts

### Scale



Contextually large change processes and impacts

Robustness, resilience, and adaptiveness of change



## Adaptive Sustainability

# Dimensions of transformational change

## Relevance



Alignment and attentiveness  
through time to goals and  
context

### 3.5 million SMEs in Turkey

- ✓ Account for 99% of total number of enterprises
- ✓ Contribute 62% of the country's GDP
- ✓ Produce 55% of the country's exports
- ✓ Provide 73% of employment



## Speed



Appropriately timed  
change that accelerates  
impacts



✓ Concessionality of CTF finance speeded up low carbon investments



✓ Government policy strengthened the enabling environment



✓ Trusted implementing agencies drew upon existing knowledge and expertise



# Systemic Change



Fundamental shifts in systems' structures and functions

- ✓ Lending by commercial banks
- ✓ Activity by leasing companies
- ✓ Progressive government goals

# National Energy Efficiency Action Plan (NEEAP) 2017-2023



## Scale



Contextually large  
change processes and  
impacts

## Components of TurSEFF

Energy Efficiency



Water Efficiency



Material Efficiency



Waste Management



Renewable Energy



## Loan Statistics of Renewable Energy and Resource Efficiency

From Beginning Until Today



**10**

years of operation



**2039**

sub-projects  
financed



**683**

million EUR worth of  
financing



**967**

thousand  
household's annual  
electricity  
consumption  
equivalent savings



**1097**

thousand cars  
carbon emission  
replaced



**592**

MW of installed  
renewable energy  
power

# Adaptive Sustainability



Robustness, resilience, and  
adaptiveness of change

- ✓ Move from concessional to market financing for energy efficiency leasing
- ✓ Strengthening government policy
- ✓ Resilience in the face of shocks





# ClF's programmatic approach: the legacy

## Barriers to Transformational Change



✓ Financial barriers were addressed through the provision of concessional finance



✓ Knowledge barriers were addressed through the provision of technical assistance



✓ Institutional barriers were addressed by strengthening the capacity within commercial bank and leasing companies



[odi.org](http://odi.org)



**ADONAI HERRERA-MARTÍNEZ**  
European Bank for  
Reconstruction and Development



# Joining the TCLP Workshop Tomorrow

Tomorrow the workshop will begin in these small groups.

You will join the workshop with a different link:

<https://rossstrategic.zoom.us/j/94232392345>

Meeting ID: 942 3239 2345



**See you back in the main  
meeting in a few  
seconds!**



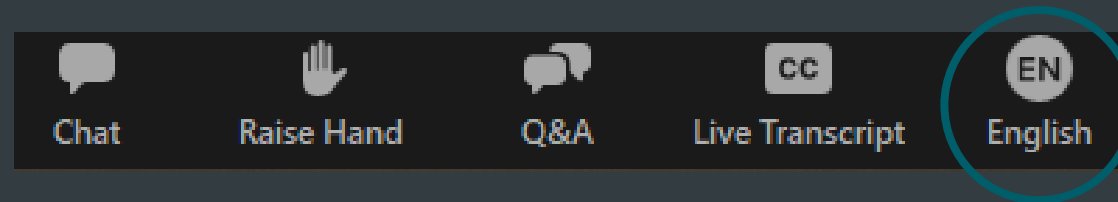
# Clean Energy: Moving from Emergent to Advanced Transformational Change

*TCLP Workshop Session 3*

**Wednesday, May 26, 2021**

# Welcome and Language Interpretation Options

Welcome to the CIF TCLP's two-day workshop! Please select the "Interpretation" button at the bottom of the Zoom screen and pick English, Spanish, or French.



¡Bienvenido al taller de dos días de CIF TCLP! Seleccione el botón "Interpretación" en la parte inferior de la pantalla Zoom y elija inglés, español o francés.

Bienvenue à l'atelier de deux jours du CIF TCLP! Veuillez sélectionner le bouton «Interprétation» au bas de l'écran Zoom et choisissez Anglais, Espagnol ou Français.





## Clean Energy Session 3 Objectives

- Identify insights that can advance thinking and action on transformational change and clean energy, drawing from case studies and participant knowledge
- Identify powerful questions that can help practitioners consider key dimensions of transformational change in the design, implementation, and evaluation of programs and projects
- Begin to identify what tools, processes, and experimentation are needed to support transformational change




# A few technical reminders...

 The meeting is being recorded.

 Mute your microphone while others are speaking.


 Raise your virtual hand to contribute to the conversation.

 Allow everyone the chance to speak and listen actively to understand others' views.

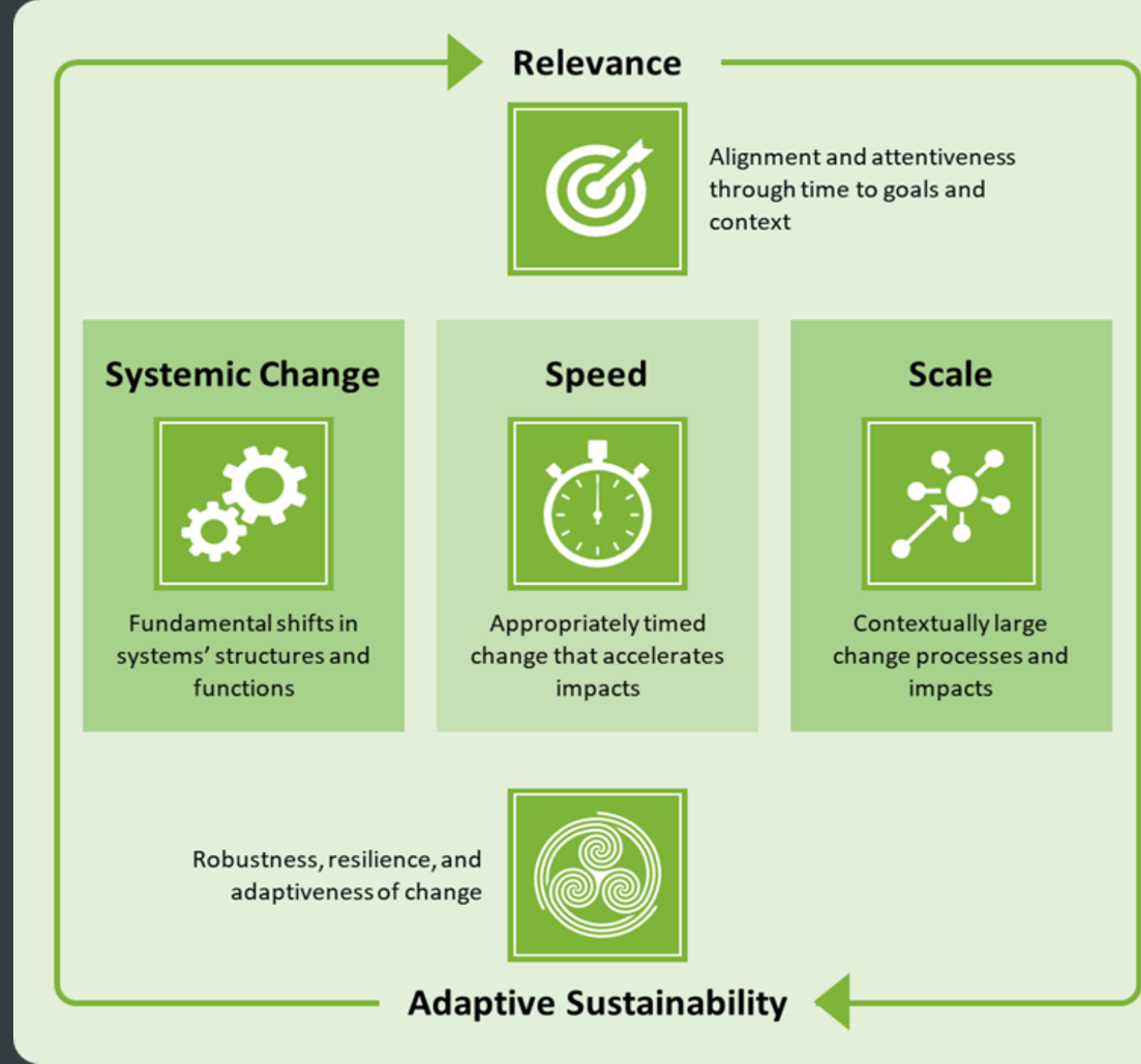
 Chat directly to **Shelby Thomas** if you need technical assistance.

slido

What is one key takeaway you have from yesterday's workshop sessions?

 Start presenting to display the poll results on this slide.

# TCLP Dimensions of Transformational Change in Climate Action







# Small Group Discussions in Breakout Rooms

# Small Group Work in Mural

- You will be invited to join a breakout room with a few other participants
- Together, you and your group will focus on two activities in Mural:
  - First, review and add to the **Key Insights for Advancing Transformational Change Related to Clean Energy** section drawing from the case study shared yesterday and/or your own experiences and knowledge **5 min**
  - Second, identify **Powerful Questions to Inform the Movement from Emerging and to Advanced Transformational Change** in the design, implementation, or assessment of Clean Energy initiatives and projects using the dimensions of transformational change as a framework **25 min**

# Mural Bird's Eye View

## TCLP May Virtual Workshop | Session 3: Moving from Emergent to Advanced Transformational Change

### CLEAN ENERGY Breakout

Facilitated by: Nandini Chaturvedula, Ross Strategic

#### 1 GET FAMILIAR WITH MURAL



#### 2 Key Insights for Advancing Transformational Change (5 minutes)

Think back to the Turkey energy efficiency case study presented yesterday in Session 2. What stood out to you? What other insights do you have on what it takes to advance transformational change in energy systems? Type insights into grey sticky notes below.

If you'd like to show agreement with a thought below, move a dot to that sticky note.



#### 4 OPTIONAL: Ideas for Using these Questions

What tools, processes, and experimentation need to be developed to support use of these types of questions to support the design, implementation, and evaluation of initiatives, programs and projects with transformation in mind? Type thoughts into grey sticky notes below.

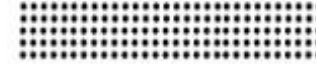
If you'd like to show agreement with a thought below, move a dot to that sticky note.



#### 3 Powerful Questions to Inform the Movement from Emerging to Advanced Transformational Change (25 minutes)

In this exercise, we will brainstorm a list of questions for each dimension of transformational change. The questions are meant to help climate finance program designers and implementers support a move to more advanced transformational change. What kinds of questions would you recommend they ask for energy initiatives? For general questions that guide the movement from emerging to more advanced transformational change please use light yellow sticky notes in the "General Questions" row at the bottom.

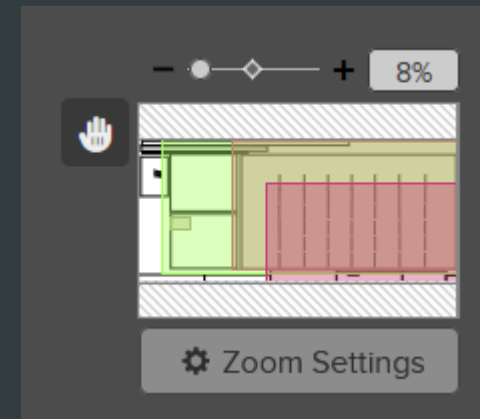
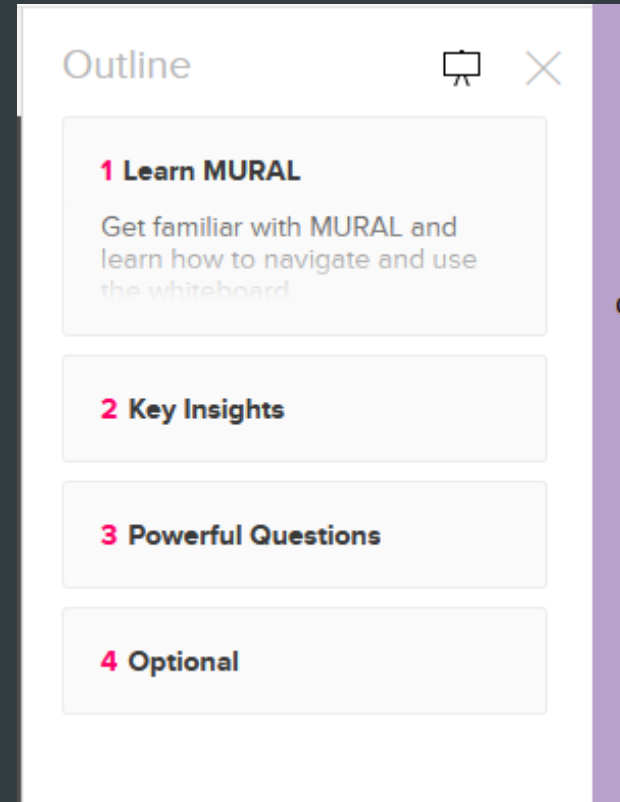
If you'd like to show agreement with a thought below, move a dot to that sticky note.



<b>Relevance</b> Alignment and effectiveness through time to goals and context	Breakout 1	Breakout 2	Breakout 3	Breakout 4	Breakout 5	Breakout 6	Breakout 7	Breakout 8
<b>Systemic Change</b> Fundamental shifts in systems structures and functions	Breakout 1	Breakout 2	Breakout 3	Breakout 4	Breakout 5	Breakout 6	Breakout 7	Breakout 8
<b>Speed</b> Accelerates impacts to achieve appropriate speed of change	Breakout 1	Breakout 2	Breakout 3	Breakout 4	Breakout 5	Breakout 6	Breakout 7	Breakout 8
<b>Scale</b> Contextually large change processes and impact	Breakout 1	Breakout 2	Breakout 3	Breakout 4	Breakout 5	Breakout 6	Breakout 7	Breakout 8
<b>Adaptive Sustainability</b> Resilience, resilience, and adaptability of change	Breakout 1	Breakout 2	Breakout 3	Breakout 4	Breakout 5	Breakout 6	Breakout 7	Breakout 8
<b>General Questions</b> To guide the movement from emerging to advanced transformation	Breakout 1	Breakout 2	Breakout 3	Breakout 4	Breakout 5	Breakout 6	Breakout 7	Breakout 8

# Using Mural

- Use the Outline on the right of your screen to easily navigate to specific sections of the Mural board
- To zoom in and out, either use your mouse or the tool on the bottom right of your screen (which also allows you to pan around the Mural board)

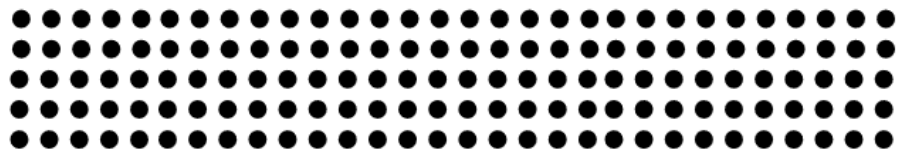





# Working in Mural

- Each breakout group will work in one column of the dimensions table
- You can move dots to sticky notes with thoughts you'd like to second, or "upvote"

If you'd like to show agreement with a thought below, move a dot to that sticky note.




**Relevance**



Alignment and attentiveness through time to goals and context

**Systemic Change**



Fundamental shifts in system's structures and functions

**Speed**



Accelerate impacts to achieve appropriate speed of change

**Scale**


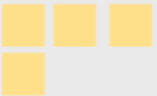
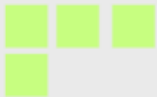
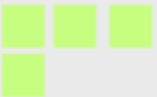

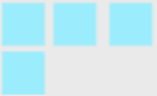


Contextually large change processes and impact

**Adaptive Sustainability**



Robustness, resilience, and adaptiveness of change

Breakout 1	Breakout 2
	
	
	
	
	

# Join Mural Before Joining Breakout Room

Make sure you can open the Mural link in the chat *before* joining your breakout room.

Send a chat message to **Sarah Abramowitz** if you have any trouble.





# Plenary Share-out

Facilitated by Nandini Chaturvedula, Ross Strategic



# Rejoin Main Meeting

Before beginning the ten-minute break, please rejoin the main meeting for Session 4 by clicking the link in chat or in your agenda:

<https://rossstrategic.zoom.us/j/95083154844>





# CIF



# CLIMATE INVESTMENT FUNDS

*Investing in the future*

