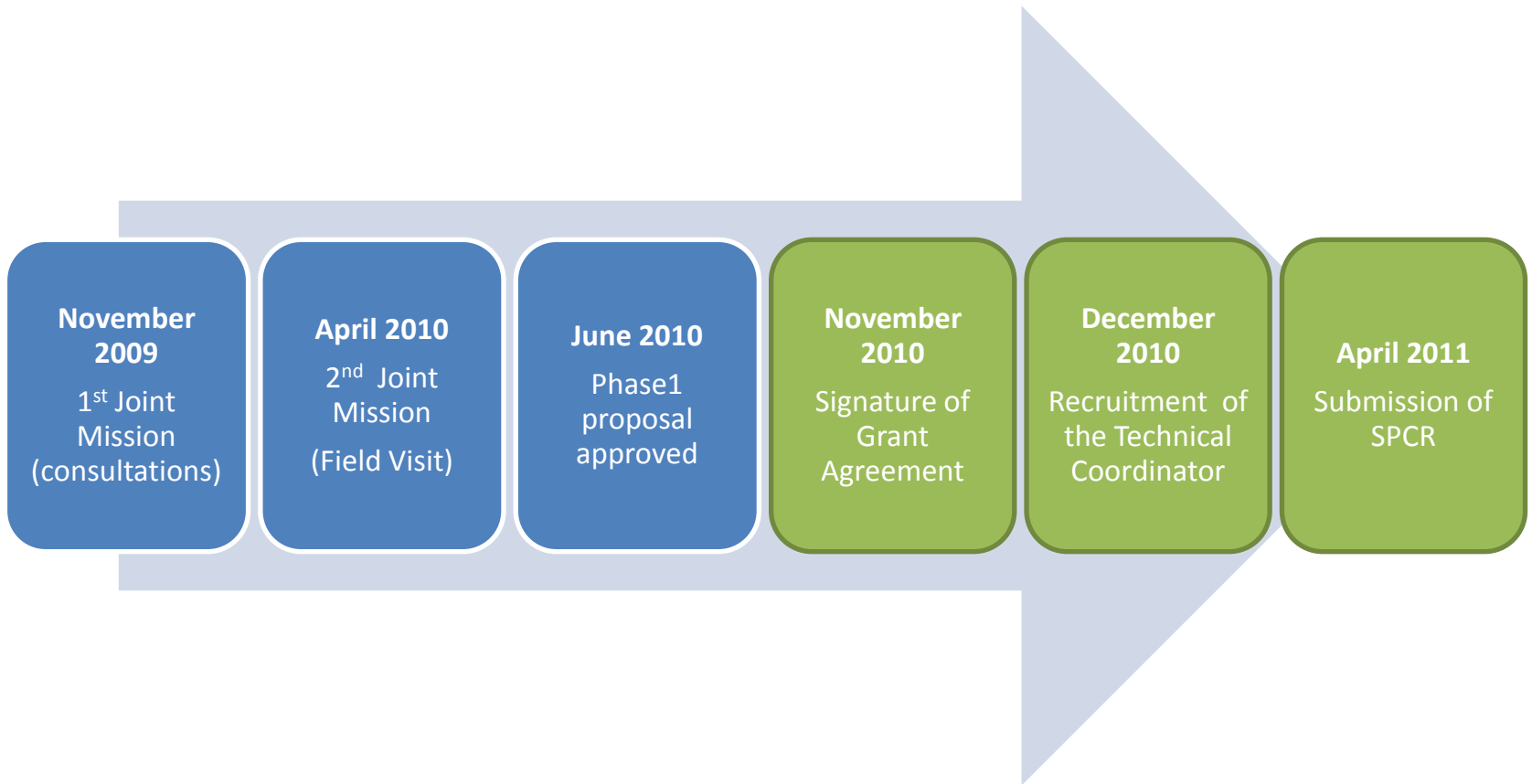


**Mozambique SPCR**  
Country meeting  
Washington dc,  
November 12, 2010

# PRESENTATION OUTLINE

1. TIME LINE FOR SPCR PREPARATION
2. PHASE 1 PROPOSAL ACTIVITIES
3. SPCR COMPONENTS
4. PILOT INVESTMENTS
5. INSTITUTIONAL ARRANGEMENTS
6. CONSULTATIONS

# Time Line for SPCR Preparation



# Phase 1 Proposal Activities

## PHASE 1

### SPCR

- Institutional and Implementation Arrangements, Donors' coordination

### Strategic Environmental and Social Assessment

- Consultation with Civil Society in the Regions

### Coastal Cities Vulnerability Study

- Sea Level Rise, Cyclones, Storm Surge

### Private Sector Vulnerability Study

- Tourism, Forestry and Ports

### Gaza Watershed

- Agriculture and Forestry

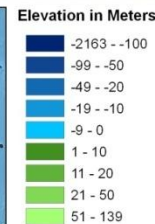
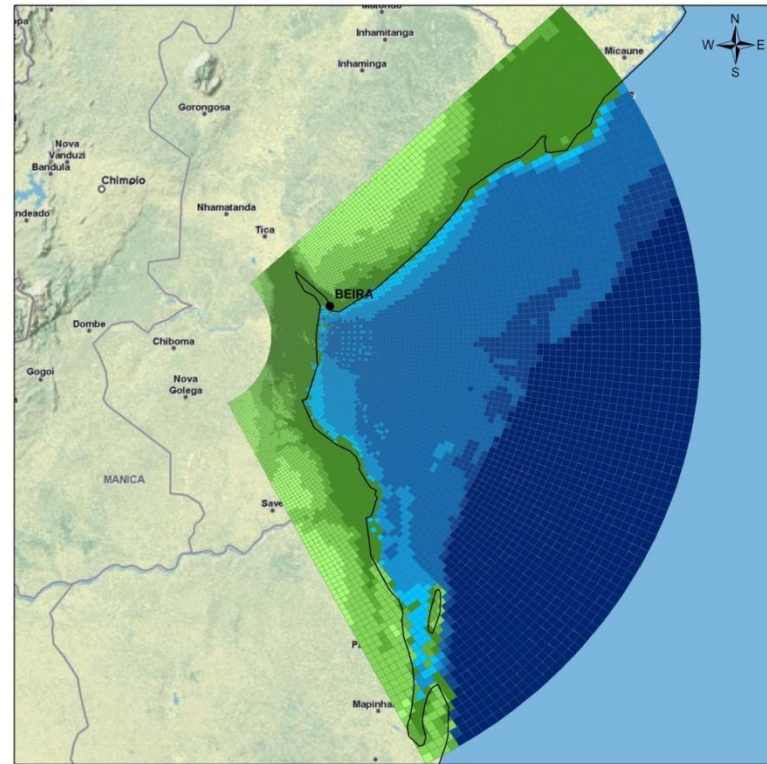
### Lower Zambezi Valley

- Roads and water infrastructure

# SPCR Components

Projects	Sectors	Implementing MDB	PPCR Financing	Co-financing
Pilot Investments	Urban	WB	25	50 (IDA)
	Agriculture	AfDB	40	13 (AfDB)
	Infrastructure (roads, water)	WB	25	75 (IDA)
Knowledge Management Capacity Building (Budget and Planning)	Ministry of Planning and development Ministry of Agriculture Ministry of Transport Ministry of State Administration	TBD	2	12 (UNDP, DFID and Denmark)
Private Sector (Insurance, Finance products: Credit line, Carbon Finance)	Forestry, Ports and Tourism	IFC	18	-
TOTAL			110	150

# Pilot Investments



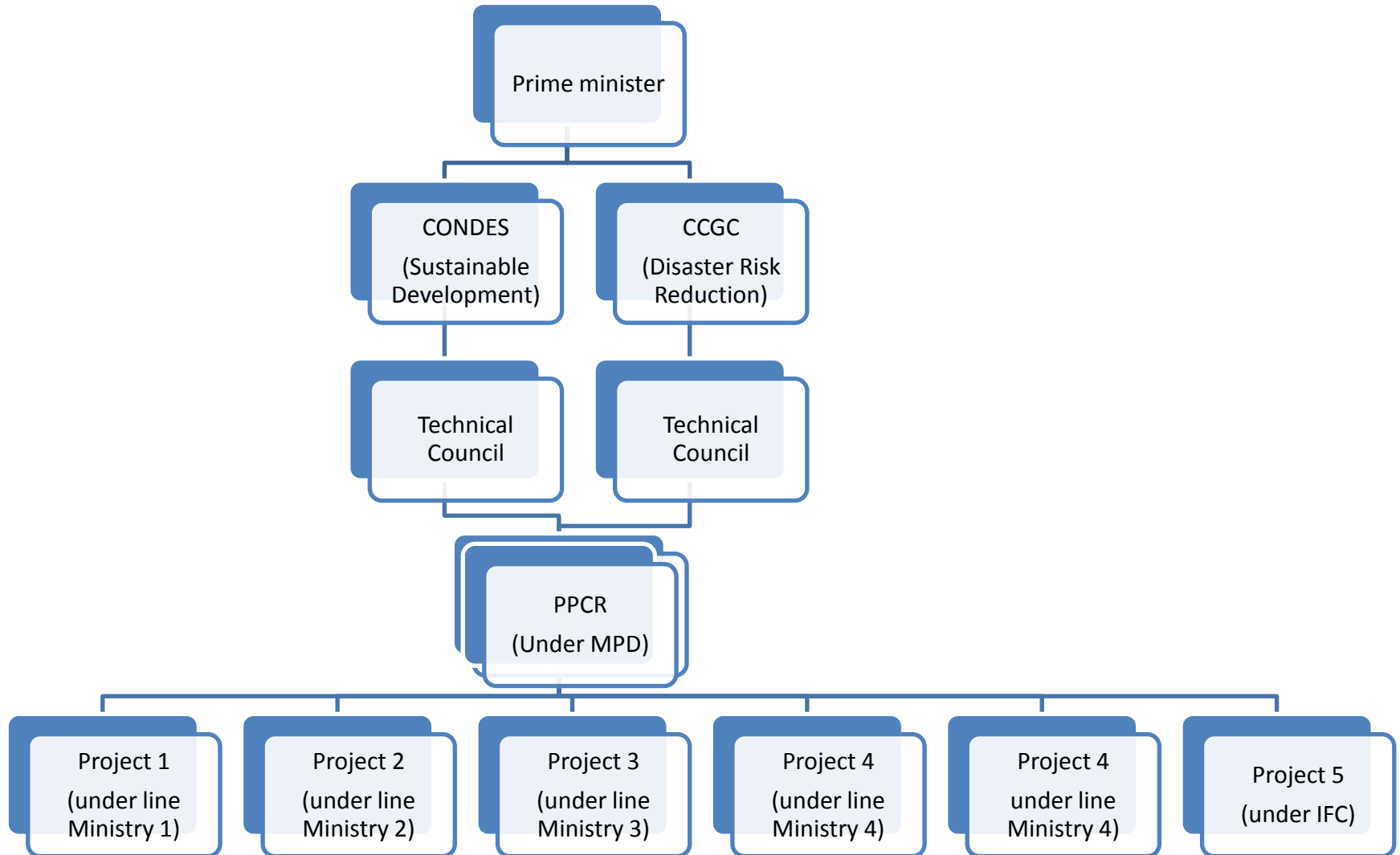
**Elevation by Grid Cell**  
Beira, Mozambique

1:245,930

This is a polar grid generated by the SLOSH model. The elevation of each cell is calculated using 3-second topography data from the USGS HydroSHEDS dataset wherever possible, and ETOPO1 1-minute bathymetry data where there is no topography coverage.

© Industrial Economics  
October 2010

# Institutional Arrangements



# Consultations

## 1<sup>st</sup> Joint Mission

- Government
- Private Sector
- Civil Society (NGO's)
- Program Aid Partners (Bilateral Institutions)

## 2<sup>nd</sup> Joint Mission

- Field Visits: Beira, Zambezi Valley, Limpopo

## Before SPCR

- SESA will involve further consultations in the different sites, including with the civil society