

RESULTS DEEP DIVE

Monitoring & Reporting Team, CIF
TFC Meetings November 2023
Washington DC

What is a
Deep
Dive?

What Can I
Learn From It?

How Can I
Access
Them?

WHAT IS A DEEP DIVE?



Yearly publication that supplements CIF's annual results reports



Provides in-depth reviews of results through a specific thematic lens



Brings greater granularity on drivers and implications of indicators

RESULTS DEEP DIVE

Monitoring & Reporting Team, CIF
TFC Meetings November 2023
Washington DC

What is a
Deep
Dive?

What Can I
Learn From It?

How Can I
Access
Them?

PUBLICATIONS

PPCR



FIP



ZOOM

SREP



CTF

ZOOM



CTF: Government Policy Support

125 MDB-approved projects
29 countries

20% of total project count include policy component

With new clean technologies evolving at a fast pace, enabling policies must be in place



Government support and enabling environment are essential to crowd in investment

Recently approved CTF projects increasingly include components to support policies and strategies conducive to climate impact



Noor Concentrated Solar Power Plant with MASEN employee in Morocco.
Source: CIF Flickr

Morocco success story of effective government support:

- The Moroccan Agency for Sustainable Energy (MASEN) was specifically created to implement the Ouarzazate and future CSP projects as PPPs.
- Framework Agreement signed between the government and MASEN to determine the rules and conditions of the supply, transmission, and marketing of the produced solar energy.



Noor Concentraed Solar Power Plant, Morocco. Source: CIF Flicker

CTF: Government Policy Support

125 MDB-approved projects
29 countries

20% of total project count include policy component

With new clean technologies evolving at a fast pace, enabling policies must be in place



Government support and enabling environment are essential to crowd in investment

Recently approved CTF projects increasingly include components to support policies and strategies conducive to climate impact



Noor Concentrated Solar Power Plant with MASEN employee in Morocco.
Source: CIF Flickr

PUBLICATIONS

PPCR



PPCR INFRASTRUCTURE
An in-depth analysis of the multi-dimensional role of infrastructure for climate resilience results in the PPCR portfolio
11 November 2022

PPCR POLICIES AND PLANNING
An in-depth analysis of the integration of climate adaptation into national, sectoral, and local policies and planning in the PPCR portfolio
11 June 2022

PPCR PEOPLE
An in-depth analysis of the volume, interests and distribution of climate resilience results for people in the PPCR portfolio
11 November 2022

FIP



FIP BIODIVERSITY CO-BENEFITS
An in-depth analysis of the biodiversity results of the FIP portfolio, examined by modalities of conservation, protection, and restoration
11 June 2022

FIP LAND TENURE, RESOURCES RIGHTS, AND BENEFIT SHARING
An in-depth analysis of the related results achieved for people and forests across the FIP portfolio
11 November 2022

FIP SUSTAINABLE LAND AND FOREST MANAGEMENT
An in-depth analysis of FIP's performance in Sustainable Land Management (SLM) and Sustainable Forest Management (SFM)
11 June 2022

ZOOM

SREP



SREP GHG EMISSION REDUCTIONS BY TECHNOLOGY
An in-depth analysis of GHG emission reductions in the SREP portfolio
11 October 2022

SREP CO-FINANCING RATIO BY GRID CONNECTION TYPE
An in-depth analysis of co-financing mobilized for the different grid connection types in the SREP portfolio
11 June 2022

CTF

ZOOM



CTF CONTRIBUTIONS TO AFFORDABLE AND CLEAN ENERGY
An in-depth analysis of benefits related to access to affordable and clean energy in the CTF portfolio
11 November 2022

CTF CO-FINANCING RATIO BY TECHNOLOGY
An in-depth analysis of co-financing mobilized for the different technologies in the CTF portfolio
11 June 2022

CTF COST OF RENEWABLE ENERGY TECHNOLOGIES
An in-depth analysis of the cost of the different renewable energy technologies in the CTF portfolio
11 June 2022

CTF GOVERNMENT POLICY SUPPORT
An in-depth analysis of CTF support to government policy reforms
11 November 2022

FIP: Land Tenure, Resources Rights, and Benefit Sharing

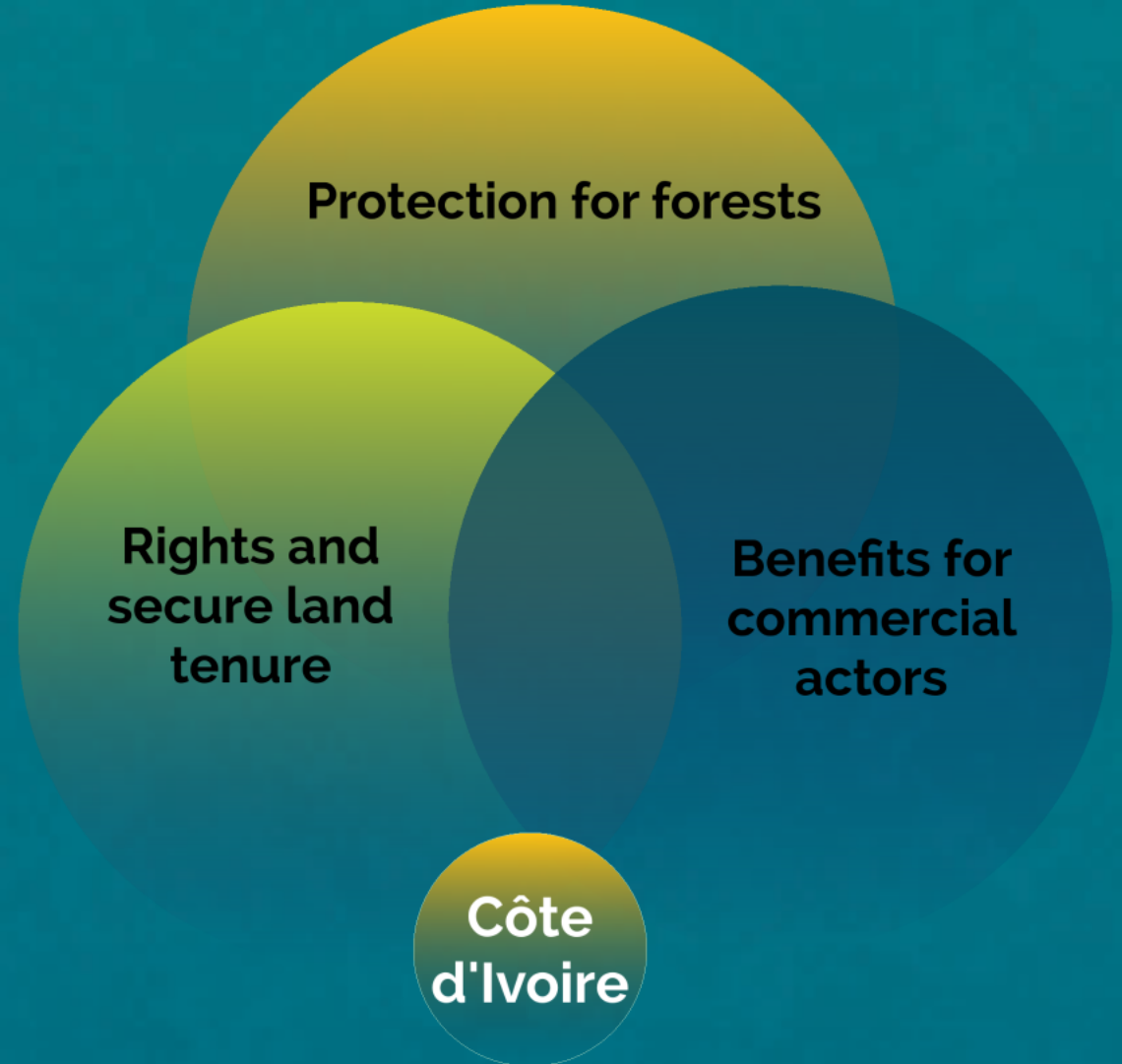
56 projects
17 countries

More than 110,000 forest stakeholders and
570 forest-associated communities reached



Land tenure secured for over 73 million ha of
woodlands of conservation areas

Land tenure secured for close to 300 million ha
of community and individual landholdings



Côte d'Ivoire Success Story:

- Curtailed forest resource exploitation by:
 - 1) Offering relocation incentives for resource-seeking migrants
 - 2) Codifying sustainable inhabitants resources rights (i.e., Forest Code)



*Reforestation site near Dimbokro, Côte d'Ivoire,
Source: CIF Flickr*

FIP: Land Tenure, Resources Rights, and Benefit Sharing

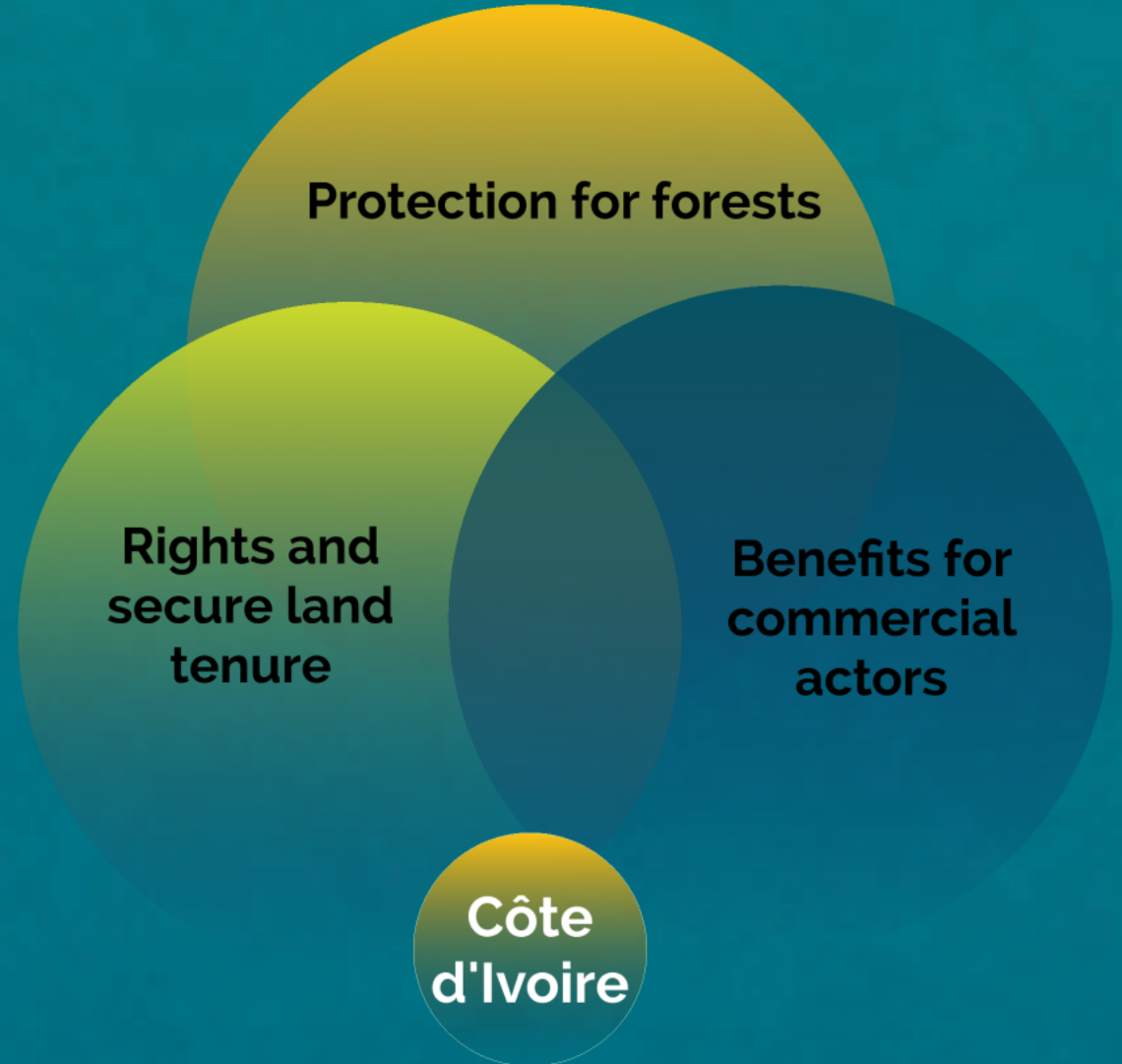
56 projects
17 countries

More than 110,000 forest stakeholders and
570 forest-associated communities reached



Land tenure secured for over 73 million ha of
woodlands of conservation areas

Land tenure secured for close to 300 million ha
of community and individual landholdings



PUBLICATIONS

PPCR



PPCR INFRASTRUCTURE
An in-depth analysis of the multi-dimensional role of infrastructure for climate resilience results in the PPCR portfolio
11 November 2022

- RESULTS DEEP DIVE SERIES!
12 Program: Real Program for Green Resilience (PPCR)
- TOPICS
- Health and Impact
 - Climate Resilience
 - Infrastructure



PPCR POLICIES AND PLANNING
An in-depth analysis of the integration of climate adaptation into national, sectoral, and local policies and planning in the PPCR portfolio
11 June 2022

- RESULTS DEEP DIVE SERIES!
12 Program: Real Program for Green Resilience (PPCR)
- TOPICS
- Health and Impact
 - Resilience
 - Climate Resilience
 - Adaptation



PPCR PEOPLE
An in-depth analysis of the volume, interests and distribution of climate resilience results for people in the PPCR portfolio
11 November 2022

- RESULTS DEEP DIVE SERIES!
12 Program: Real Program for Green Resilience (PPCR)
- TOPICS
- Health and Impact
 - Climate Resilience
 - People

FIP



FIP BIODIVERSITY CO-BENEFITS
An in-depth analysis of the biodiversity results of the FIP portfolio, examined by modalities of conservation, protection, and restoration
11 June 2022

- RESULTS DEEP DIVE SERIES!
12 Program: Real Investment Program (FIP)
- TOPICS
- Health and Impact
 - Sustainable Finance
 - Nature



FIP LAND TENURE, RESOURCES RIGHTS, AND BENEFIT SHARING
An in-depth analysis of the related results achieved for people and communities across the FIP portfolio
11 November 2022

- RESULTS DEEP DIVE SERIES!
12 Program: Real Investment Program (FIP)
- TOPICS
- Health and Impact
 - Sustainable Finance
 - People, Rights, and Wellbeing Access



FIP SUSTAINABLE LAND AND FOREST MANAGEMENT
An in-depth analysis of FIP's performance in Sustainable Land Management (SLM) and Sustainable Forest Management (SFM)
11 June 2022

- RESULTS DEEP DIVE SERIES!
12 Program: Real Investment Program (FIP)
- TOPICS
- Health and Impact
 - Sustainable Finance
 - Land Use

ZOOM

SREP



SREP GHG EMISSION REDUCTIONS BY TECHNOLOGY
An in-depth analysis of GHG emission reductions in the SREP portfolio
11 October 2022

- RESULTS DEEP DIVE SERIES!
12 Program: Scaling by Renewable Energy Program in Low Income Countries (SREP)
- TOPICS
- Health and Impact
 - GHG emissions
 - Renewable Energy Technologies



SREP CO-FINANCING RATIO BY GRID CONNECTION TYPE
An in-depth analysis of co-financing mobilized for the different grid connection types in the SREP portfolio
11 June 2022

- RESULTS DEEP DIVE SERIES!
12 Program: Scaling by Renewable Energy Program in Low Income Countries (SREP)
- TOPICS
- Health and Impact
 - Energy Access
 - Climate Finance

CTF

ZOOM



CTF CONTRIBUTIONS TO AFFORDABLE AND CLEAN ENERGY
An in-depth analysis of benefits related to access to affordable and clean energy in the CTF portfolio
11 November 2022

- RESULTS DEEP DIVE SERIES!
12 Program: Clean Technology Fund (CTF)
- TOPICS
- Health and Impact
 - Renewable Energy
 - Energy Technology



CTF CO-FINANCING RATIO BY TECHNOLOGY
An in-depth analysis of co-financing mobilized for the different technologies in the CTF portfolio
11 June 2022

- RESULTS DEEP DIVE SERIES!
12 Program: Clean Technology Fund (CTF)
- TOPICS
- Health and Impact
 - Clean Technology
 - Renewable Energy



CTF COST OF RENEWABLE ENERGY TECHNOLOGIES
An in-depth analysis of the cost of the different renewable energy technologies in the CTF portfolio
11 June 2022

- RESULTS DEEP DIVE SERIES!
12 Program: Clean Technology Fund (CTF)
- TOPICS
- Health and Impact
 - Clean Technology
 - Renewable Energy



CTF GOVERNMENT POLICY SUPPORT
An in-depth analysis of CTF support to government policy reforms
11 November 2022

- RESULTS DEEP DIVE SERIES!
12 Program: Clean Technology Fund (CTF)
- TOPICS
- Health and Impact
 - Clean Technology
 - Government Policy

RESULTS DEEP DIVE

Monitoring & Reporting Team, CIF
TFC Meetings November 2023
Washington DC

What is a
Deep
Dive?

What Can I
Learn From It?

How Can I
Access
Them?


HOW CAN I ACCESS THEM?


CIF.ORG

The screenshot shows a web browser window displaying the CIF website. The browser's address bar shows the URL cif.org/resource-collections/results-deep-dive-series. The website header includes the CIF logo and navigation links: ABOUT, GOVERNANCE, OUR WORK, NEWS & EVENTS, LEARNING LABORATORY, and CONTACT. The main content area is titled "RESOURCES IN THIS COLLECTION" and features a grid of 10 resource cards, each labeled "EVIDENCE SYNTHESIS".

Resource Title	Date
CTF Contributions to Affordable and Clean Energy	Nov 07, 2023
SREP GHG emission reductions by technology	Nov 06, 2023
CTF Government Policy Support	Nov 06, 2023
FIP Land Tenure Security, Resources Rights and Access, and Benefit Sharing	Nov 06, 2023
FIP Sustainable Land and Forest Management	Jun 22, 2023
FIP Biodiversity Co-benefits	Jun 22, 2023
CTF Cost of Renewable Energy Technologies	Jun 21, 2023
SREP Co-financing Ratio by Grid Connection Type	Jun 19, 2023
CTF Co-financing Ratio by Technology	Jun 16, 2023
PPCR Policies and Planning	Jun 16, 2023

RESOURCES IN THIS COLLECTION

DISPLAY  



EVIDENCE SYNTHESIS

CTF Contributions to Affordable and Clean Energy
Nov 07, 2023



EVIDENCE SYNTHESIS

SREP GHG emission reductions by technology
Nov 06, 2023



EVIDENCE SYNTHESIS

CTF Government Policy Support
Nov 06, 2023



EVIDENCE SYNTHESIS

FIP Land Tenure Security, Resources Rights and Access, and Benefit Sharing
Nov 06, 2023



EVIDENCE SYNTHESIS

FIP Sustainable Land and Forest Management
Jun 22, 2023



EVIDENCE SYNTHESIS

FIP Biodiversity Co-benefits
Jun 22, 2023



EVIDENCE SYNTHESIS

CTF Cost of Renewable Energy Technologies
Jun 21, 2023



EVIDENCE SYNTHESIS

SREP Co-financing Ratio by Grid Connection Type
Jun 19, 2023



EVIDENCE SYNTHESIS

CTF Co-financing Ratio by Technology
Jun 16, 2023



EVIDENCE SYNTHESIS

PPCR Policies and Planning
Jun 16, 2023

RESULTS DEEP DIVE

Monitoring & Reporting Team, CIF
TFC Meetings November 2023
Washington DC

What is a
Deep
Dive?

What Can I
Learn From It?

How Can I
Access
Them?