



REPUBLIC



OF ZAMBIA



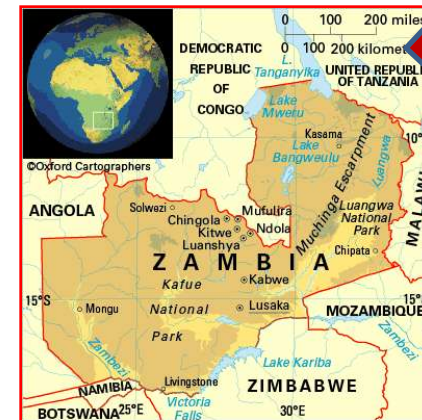
Pilot Program for Climate Resilience

Institutional Arrangements for streamlining climate Resilience

Presentation at the Meeting of Pilot Countries
Manila, Philippines

By David C. Kaluba

Principal Economist
Ministry of Finance and National Planning
Government of the Republic of Zambia





Zambia at a Glance

Population 12.2 million
Poverty level: 64%
Rural Population: 64%
70% engaged in agriculture

750,000 km²
GNI per capita: US\$950/year
GDP Growth: 5%

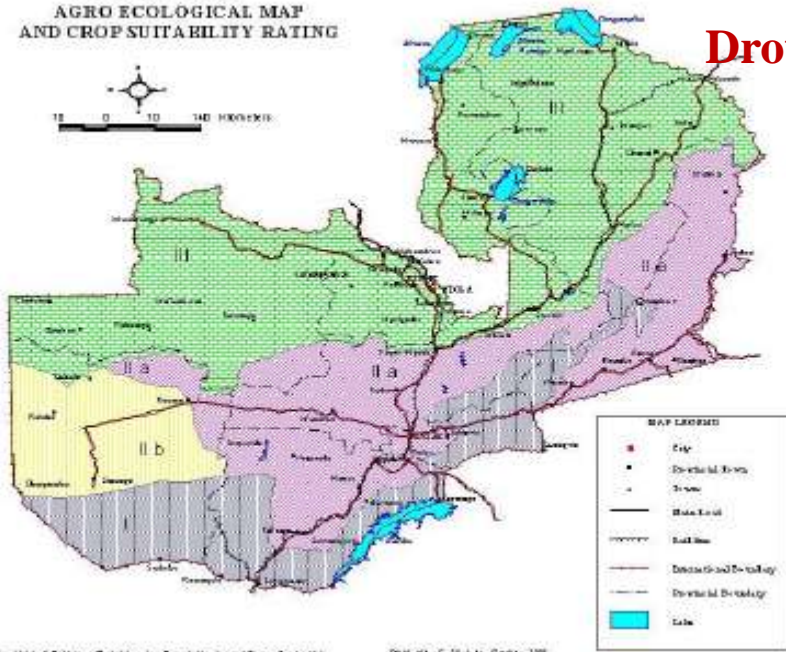


Rainfall: 600-1,100 mm
58% arable land
47% woodland

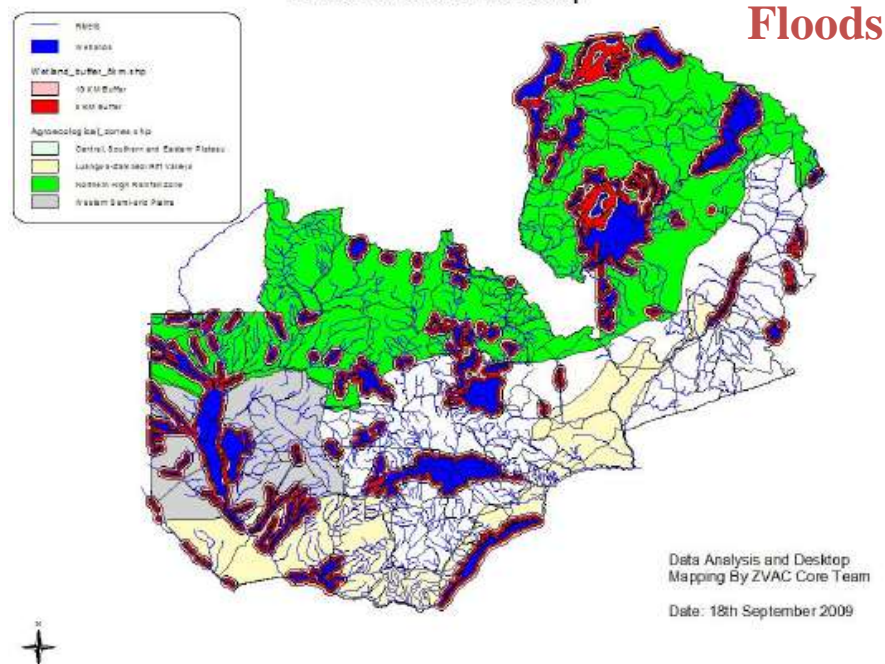


Zambia: Major Climate Risks

REPUBLIC OF ZAMBIA
AGRO ECOLOGICAL MAP
AND CROP SUITABILITY RATING



Flood Hazard and Risk Map



Droughts: Agro-Ecological Zone I+II

Floods: Northwestern, Western, southern, Northern Province, river basins

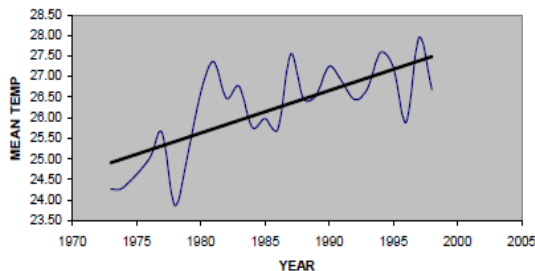
Agriculture, Health, Nat. Resources, Forestry, Water, Energy, Food Security

Agriculture, Food Security, Housing, Health, Water, Sanitation, Infrastructure, Education



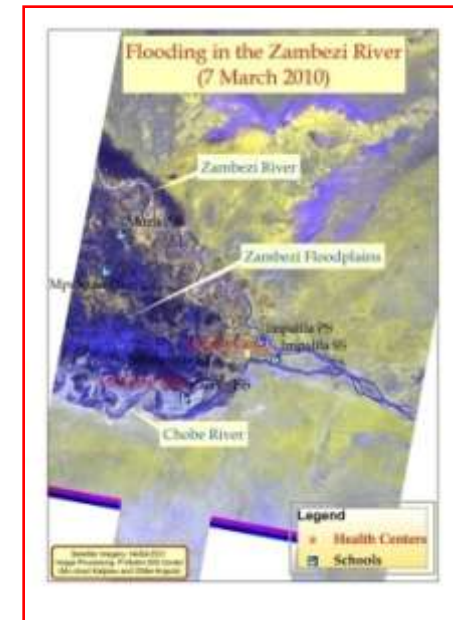
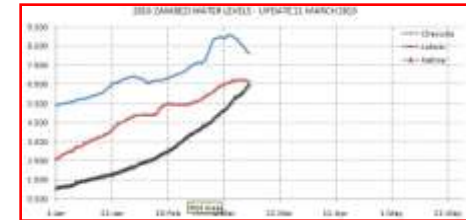
Trends

- *Temperatures have been increasing by 0.6° per decade since 1970.*
- *Projected to become drier in west, wetter in east Zambia*
- *Floods and droughts have become near annual events, affecting 12% of population*



Year	Disaster	Killed	Total affected
1978	Flood	11	30,900
1981	Drought		0
1983	Drought		0
1989	Flood		800,000
1990	Drought		1,700,000
1995	Drought		1,273,204
1998	Flood		1,300,000
2000	Flood		12,000
2001	Flood	5	617,900
2003	Flood		10,000
2003	Flood	4	1,000
2004	Flood	2	196,398
2005	Flood		4,000
2005	Drought		1,200,000
2007	Flood	4	1,400,000
2007	Flood		118,755
2007	Flood	1	34,776
2008	Flood	4	15,000

For the third straight year, the Zambezi has flooded





PPCR Objective

To mainstream climate change in the Sixth National Development Plan and other key strategies in order to ensure sustainable economic development towards the attainment of Zambia's Vision 2030

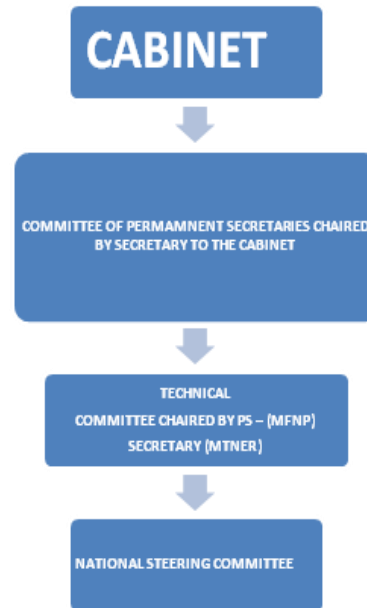
Key Indicators:

For the most vulnerable sectors (Agriculture, Works and Supplies, Health, Energy and Water, and Environment and Natural Resources) proportion of budgetary allocation to climate adaptation activities increased by at least 25% in the 2011 National Budget





Zambia is looking at the PPCR within a broader context of its Climate Change Strategy



The PPCR will be managed from within a broader economic and institutional delivery mechanism for strengthening climate programs in Zambia.



PPCR Phase I

Component 1. Mainstreaming Climate Resilience into National Development Planning

Incorporate climate change considerations – in particular adaptation – into the development planning process and strategic plans

Process: An expert task force established to advise Ministry of Finance and Sectoral Advisory Groups on climate change mainstreaming – followed by regional consultations.

Key Indicators:

- Climate resilience mainstreamed in the Strategic Plans of key Sectoral Ministries
- Climate Change mainstreamed into the 2011 budget





PPCR Phase I

Component 2. Strengthened Institutional Coordination

Strengthened coordination amongst stakeholders and institutions responsible for climate change

Process: Strengthening of a national platform of focal points for climate change/disaster risk management including key Ministries/civil society/private sector and academia, promoting the concept of “national champions”

This component will be implemented by the MOFNP in close collaboration with MTENR and DMMU

Key Indicators:

- **A national institutional framework to coordinate climate change that builds upon existing programs and optimizes local capacity**
- **An approved National Climate Change Strategy**





PPCR Phase I

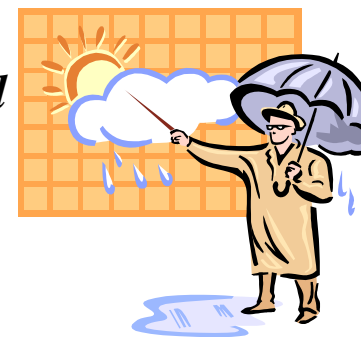
Component 3. Improved Information for Decision Makers

Strengthened information available to decision makers and general public on climate change trends and impacts, enabling them to make more informed decisions

Process: Strengthening of climate forecast system; within PPCR, enable private sector associations to contract out sectoral/economic impact analysis on impacts of climate change

Key Indicators:

- **Developing downscaled Global Circulation Models and climate scenarios specifically for Zambia**
- **Digitization of satellite rainfall estimates to improve accuracy of forecasts**
- **Priority sectoral/economic impact analysis**





PPCR Phase I

Component 4. Targeted Awareness and Information

Strengthened awareness on the critical importance of climate change adaptation in the development process

Process: Partnerships with civil society networks to develop targeted media and policy makers briefs, and Living with Floods Campaign

Key Indicators:

- **Dissemination of Living with Floods Campaign to vulnerable communities in Upper Zambezi**
- **Number of media hits and community based radio programs produced on climate change**
- **Briefs to high level policy makers about outcome of global climate change negotiations**



Sometimes man occupies the house of the river...

And sometimes the river occupies the house of the man

Living with Floods Campaign in the Zambezi



PPCR Phase I Component 5. Preparation for Phase II

A programmatic framework that supports climate resilience in Zambia – through the collaborative efforts of all development partners

Process: Identify priority sectoral investment programs for climate proofing, to which PPCR and other Government, donor, and private financing could contribute. PPCR investments are expected to supplement ongoing projects/programs.

Key Indicators:

- A financing framework for a national program for climate resilience
- Design of PPCR investments for Phase II



For More Information, please contact
dckaluba@juno.com or david.kaluba@mofnp.gov.zm

